

Anti-Phospho-PLD2-Tyr169 antibody (136-185 aa) (STJ90989)

STJ90989

GENERAL INFORMATION

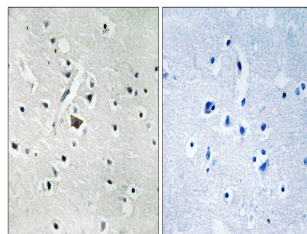
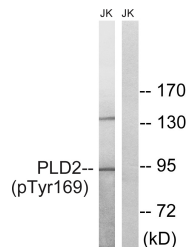
Product Type	Primary antibodies
Short Description	Rabbit polyclonal antibody anti-Phospho-Phospholipase D2-Tyr169 (136-185 aa) is suitable for use in Western Blot, Immunohistochemistry, Immunofluorescence and ELISA research applications.
Applications	WB/IHC/IF/ELISA
Host/Source	Rabbit
Reactivity	Human/Mouse/Rat

PRODUCT PROPERTIES

Clonality	Polyclonal
Clone ID	
Concentration	1 mg/mL
Conjugation	Unconjugated
Purification	The antibody was affinity-purified from rabbit antiserum by affinity-chromatography using epitope-specific immunogen.
Dilution Range	WB 1:500-1:2000 IHC 1:100-1:300 ELISA 1:10000 IF 1:50-200
Formulation	Liquid in PBS containing 50% Glycerol, 0.5% BSA and 0.02% Sodium Azide.
Isotype	IgG
Storage Instruction	Store at -20°C for up to 1 year from the date of receipt, and avoid repeat freeze-thaw cycles.

TARGET INFORMATION

Gene ID	5338
Gene Symbol	PLD2
Uniprot ID	PLD2_HUMAN
Immunogen	The antiserum was produced against synthesized peptide derived from the human PLD2 around the phosphorylation site of Tyr169 at the amino acid range 136-185
Immunogen Region	136-185 aa
Specificity	Phospho-PC-PLD2 (Y169) Polyclonal Antibody detects endogenous levels of PC-PLD2 protein only when phosphorylated at Y169.
Immunogen Sequence	



This product is suitable for in-vitro studies under the RESEARCH USE ONLY [RUO] licence. This product must not be used as for diagnostic or other medical purposes.
St John's Laboratory Ltd, Knowledge Dock Business Centre, University Way, London, E16 2RD | Tel: 0208 223 3081