

## Anti-Phospho-MKNK1-Thr385 antibody (351-400 aa) (STJ90984)

STJ90984

### GENERAL INFORMATION

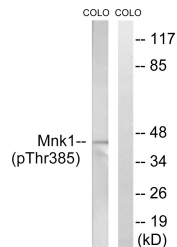
<b>Product Type</b>	Primary antibodies
<b>Short Description</b>	Rabbit polyclonal antibody anti-Phospho-MAP kinase-interacting serine/threonine-protein kinase 1-Thr385 (351-400 aa) is suitable for use in Western Blot, Immunohistochemistry, Immunofluorescence and ELISA research applications.
<b>Applications</b>	WB/IHC/IF/ELISA
<b>Host/Source</b>	Rabbit
<b>Reactivity</b>	Human/Mouse/Rat

### PRODUCT PROPERTIES

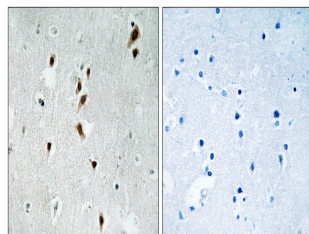
<b>Clonality</b>	Polyclonal
<b>Clone ID</b>	
<b>Concentration</b>	1 mg/mL
<b>Conjugation</b>	Unconjugated
<b>Purification</b>	The antibody was affinity-purified from rabbit antiserum by affinity-chromatography using epitope-specific immunogen.
<b>Dilution</b>	WB 1:500-1:2000
<b>Range</b>	IHC 1:100-1:300 ELISA 1:20000 IF 1:50-200
<b>Formulation</b>	Liquid in PBS containing 50% Glycerol, 0.5% BSA and 0.02% Sodium Azide.
<b>Isotype</b>	IgG
<b>Storage</b>	Store at -20°C for up to 1 year from the date of receipt, and avoid repeat freeze-thaw cycles.
<b>Instruction</b>	

### TARGET INFORMATION

<b>Gene ID</b>	8569
<b>Gene Symbol</b>	MKNK1
<b>Uniprot ID</b>	MKNK1_HUMAN
<b>Immunogen</b>	The antiserum was produced against synthesized peptide derived from the human Mnk1 around the phosphorylation site of Thr385 at the amino acid range 351-400
<b>Immunogen Region</b>	351-400 aa
<b>Specificity</b>	Phospho-Mnk1 (T385) Polyclonal Antibody detects endogenous levels of Mnk1 protein only when phosphorylated at T385.
<b>Immunogen Sequence</b>	



Western blot analysis of lysates from COLO205 cells treated with PMA 125ng/ml 30', using Mnk1 (Phospho-Thr385) Antibody. The lane on the right is blocked with the phospho peptide.



Immunohistochemistry analysis of paraffin-embedded human brain, using Mnk1 (Phospho-Thr385) Antibody. The picture on the right is blocked with the phospho peptide.