

Anti-Phospho-CTBP1-Ser422 antibody (388-437 aa) (STJ90975)

STJ90975

GENERAL INFORMATION

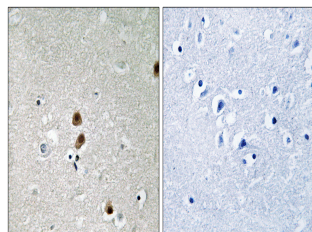
Product Type	Primary antibodies
Short Description	Rabbit polyclonal antibody anti-Phospho-C-terminal-binding protein 1-Ser422 (388-437 aa) is suitable for use in Western Blot, Immunohistochemistry, Immunofluorescence and ELISA research applications.
Applications	WB/IHC/IF/ELISA
Host/Source	Rabbit
Reactivity	Human/Mouse/Rat

PRODUCT PROPERTIES

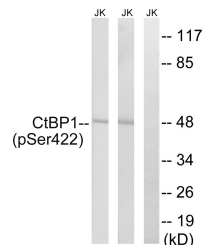
Clonality	Polyclonal
Clone ID	
Concentration	1 mg/mL
Conjugation	Unconjugated
Purification	The antibody was affinity-purified from rabbit antiserum by affinity-chromatography using epitope-specific immunogen.
Dilution	WB 1:500-1:2000
Range	IHC 1:100-1:300 ELISA 1:10000 IF 1:50-200
Formulation	Liquid in PBS containing 50% Glycerol, 0.5% BSA and 0.02% Sodium Azide.
Isotype	IgG
Storage Instruction	Store at -20°C for up to 1 year from the date of receipt, and avoid repeat freeze-thaw cycles.

TARGET INFORMATION

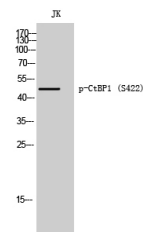
Gene ID	1487
Gene Symbol	CTBP1
Uniprot ID	CTBP1_HUMAN
Immunogen	The antiserum was produced against synthesized peptide derived from the human CtBP1 around the phosphorylation site of Ser422 at the amino acid range 388-437
Immunogen Region	388-437 aa
Specificity	Phospho-CtBP1 (S422) Polyclonal Antibody detects endogenous levels of CtBP1 protein only when phosphorylated at S422.
Immunogen Sequence	



Immunohistochemistry analysis of paraffin-embedded human brain, using CtBP1 (Phospho-Ser422) Antibody. The picture on the right is blocked with the phospho peptide.



Western blot analysis of lysates from Jurkat cells treated with TNF 20ng/ml 30' and Jurkat cells treated with UV 15', using CtBP1 (Phospho-Ser422) Antibody. The lane on the right is blocked with the phospho peptide.



Western blot analysis of JK cells using Phospho-CtBP1 (S422) Polyclonal Antibody