

Anti-Phospho-STK39-Ser309 antibody (277-326 aa) (STJ90959)

STJ90959

GENERAL INFORMATION

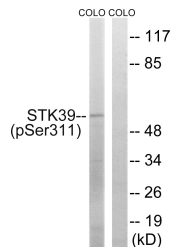
Product Type	Primary antibodies
Short Description	Rabbit polyclonal antibody anti-Phospho-STE20/SPS1-related proline-alanine-rich protein kinase-Ser309 (277-326 aa) is suitable for use in Western Blot, Immunohistochemistry, Immunofluorescence and ELISA research applications.
Applications	WB/IHC/IF/ELISA
Host/Source	Rabbit
Reactivity	Human/Mouse/Rat

PRODUCT PROPERTIES

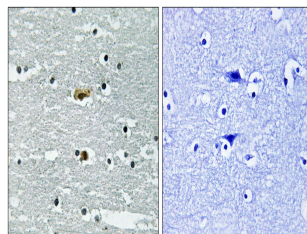
Clonality	Polyclonal
Clone ID	
Concentration	1 mg/mL
Conjugation	Unconjugated
Purification	The antibody was affinity-purified from rabbit antiserum by affinity-chromatography using epitope-specific immunogen.
Dilution	WB 1:500-1:2000
Range	IHC 1:100-1:300 ELISA 1:5000 IF 1:50-200
Formulation	Liquid in PBS containing 50% Glycerol, 0.5% BSA and 0.02% Sodium Azide.
Isotype	IgG
Storage Instruction	Store at -20°C for up to 1 year from the date of receipt, and avoid repeat freeze-thaw cycles.

TARGET INFORMATION

Gene ID	27347
Gene Symbol	STK39
Uniprot ID	STK39_HUMAN
Immunogen	The antiserum was produced against synthesized peptide derived from the human STK39 around the phosphorylation site of Ser311 at the amino acid range 277-326
Immunogen Region	277-326 aa
Specificity	Phospho-SPAK (S311) Polyclonal Antibody detects endogenous levels of SPAK protein only when phosphorylated at S311.
Immunogen Sequence	



Western blot analysis of lysates from COLO205 cells, using STK39 (Phospho-Ser311) Antibody. The lane on the right is blocked with the phospho peptide.



Immunohistochemistry analysis of paraffin-embedded human brain, using STK39 (Phospho-Ser311) Antibody. The picture on the right is blocked with the phospho peptide.

This product is suitable for in-vitro studies under the RESEARCH USE ONLY [RUO] licence. This product must not be used as for diagnostic or other medical purposes.
St John's Laboratory Ltd, Knowledge Dock Business Centre, University Way, London, E16 2RD | Tel: 0208 223 3081