

Anti-Phospho-PAK1-Ser204 antibody (170-219 aa) (STJ90954)

STJ90954

GENERAL INFORMATION

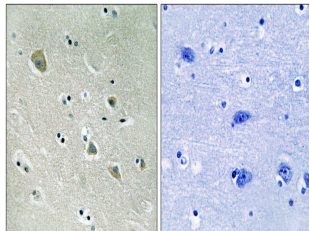
Product Type	Primary antibodies
Short Description	Rabbit polyclonal antibody anti-Phospho-Serine/threonine-protein kinase PAK 1-Ser204 (170-219 aa) is suitable for use in Western Blot, Immunohistochemistry, Immunofluorescence and ELISA research applications.
Applications	WB/IHC/IF/ELISA
Host/Source	Rabbit
Reactivity	Human/Mouse/Rat

PRODUCT PROPERTIES

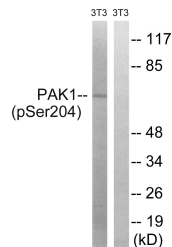
Clonality	Polyclonal
Clone ID	
Concentration	1 mg/mL
Conjugation	Unconjugated
Purification	The antibody was affinity-purified from rabbit antiserum by affinity-chromatography using epitope-specific immunogen.
Dilution	WB 1:500-1:2000
Range	IHC 1:100-1:300 ELISA 1:5000 IF 1:50-200
Formulation	Liquid in PBS containing 50% Glycerol, 0.5% BSA and 0.02% Sodium Azide.
Isotype	IgG
Storage Instruction	Store at -20°C for up to 1 year from the date of receipt, and avoid repeat freeze-thaw cycles.

TARGET INFORMATION

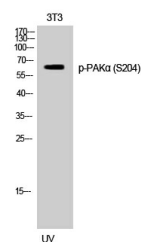
Gene ID	5058
Gene Symbol	PAK1
Uniprot ID	PAK1_HUMAN
Immunogen	The antiserum was produced against synthesized peptide derived from the human PAK1 around the phosphorylation site of Ser204 at the amino acid range 170-219
Immunogen Region	170-219 aa
Specificity	Phospho-PAK Alpha (S204) Polyclonal Antibody detects endogenous levels of PAK Alpha protein only when phosphorylated at S204.
Immunogen Sequence	



Immunohistochemistry analysis of paraffin-embedded human brain, using PAK1 (Phospho-Ser204) Antibody. The picture on the right is blocked with the phosphopeptide.



Western blot analysis of lysates from NIH/3T3 cells treated with UV 15', using PAK1 (Phospho-Ser204) Antibody. The lane on the right is blocked with the phosphopeptide.



Western blot analysis of 3T3 cells using Phospho-PAK Alpha (S204) Polyclonal Antibody

This product is suitable for in-vitro studies under the RESEARCH USE ONLY [RUO] licence. This product must not be used as for diagnostic or other medical purposes.
St John's Laboratory Ltd, Knowledge Dock Business Centre, University Way, London, E16 2RD | Tel: 0208 223 3081