

Anti-Phospho-OXSR1-Thr185 antibody (151-200 aa) (STJ90953)

STJ90953

GENERAL INFORMATION

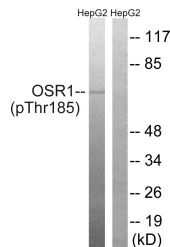
Product Type	Primary antibodies
Short Description	Rabbit polyclonal antibody anti-Phospho-Serine/threonine-protein kinase OSR1-Thr185 (151-200 aa) is suitable for use in Western Blot, Immunohistochemistry, Immunofluorescence and ELISA research applications.
Applications	WB/IHC/IF/ELISA
Host/Source	Rabbit
Reactivity	Human/Mouse

PRODUCT PROPERTIES

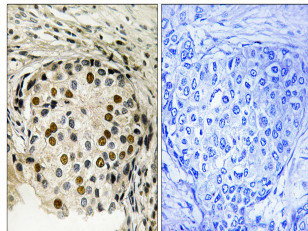
Clonality	Polyclonal
Clone ID	
Concentration	1 mg/mL
Conjugation	Unconjugated
Purification	The antibody was affinity-purified from rabbit antiserum by affinity-chromatography using epitope-specific immunogen.
Dilution Range	WB 1:500-1:2000 IHC 1:100-1:300 ELISA 1:10000 IF 1:50-200
Formulation	Liquid in PBS containing 50% Glycerol, 0.5% BSA and 0.02% Sodium Azide.
Isotype	IgG
Storage Instruction	Store at -20°C for up to 1 year from the date of receipt, and avoid repeat freeze-thaw cycles.

TARGET INFORMATION

Gene ID	9943
Gene Symbol	OXSR1
Uniprot ID	OXSR1_HUMAN
Immunogen	The antiserum was produced against synthesized peptide derived from the human OSR1 around the phosphorylation site of Thr185 at the amino acid range 151-200
Immunogen Region	151-200 aa
Specificity	Phospho-OSR1 (T185) Polyclonal Antibody detects endogenous levels of OSR1 protein only when phosphorylated at T185.
Immunogen Sequence	



Western blot analysis of lysates from HepG2 cells treated with serum 20% 15', using OSR1 (Phospho-Thr185) Antibody. The lane on the right is blocked with the phospho peptide.



Immunohistochemistry analysis of paraffin-embedded human breast carcinoma, using OSR1 (Phospho-Thr185) Antibody. The picture on the right is blocked with the phospho peptide.