

Anti-Phospho-MAP2K7-Ser271 antibody (236-285 aa) (STJ90950)

STJ90950

GENERAL INFORMATION

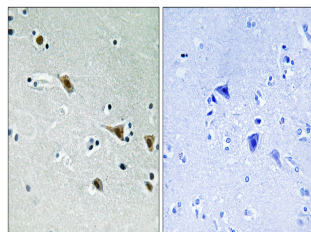
Product Type	Primary antibodies
Short Description	Rabbit polyclonal antibody anti-Phospho-Dual specificity mitogen-activated protein kinase kinase 7-Ser271 (236-285 aa) is suitable for use in Western Blot, Immunohistochemistry, Immunofluorescence and ELISA research applications.
Applications	WB/IHC/IF/ELISA
Host/Source	Rabbit
Reactivity	Human/Mouse/Rat

PRODUCT PROPERTIES

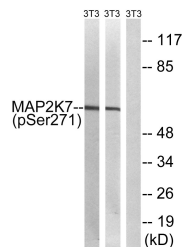
Clonality	Polyclonal
Clone ID	
Concentration	1 mg/mL
Conjugation	Unconjugated
Purification	The antibody was affinity-purified from rabbit antiserum by affinity-chromatography using epitope-specific immunogen.
Dilution	WB 1:500-1:2000
Range	IHC 1:100-1:300 ELISA 1:20000 IF 1:50-200
Formulation	Liquid in PBS containing 50% Glycerol, 0.5% BSA and 0.02% Sodium Azide.
Isotype	IgG
Storage Instruction	Store at -20°C for up to 1 year from the date of receipt, and avoid repeat freeze-thaw cycles.

TARGET INFORMATION

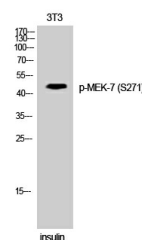
Gene ID	5609
Gene Symbol	MAP2K7
Uniprot ID	MP2K7_HUMAN
Immunogen	The antiserum was produced against synthesized peptide derived from the human MAP2K7 around the phosphorylation site of Ser271 at the amino acid range 236-285
Immunogen Region	236-285 aa
Specificity	Phospho-MEK-7 (S271) Polyclonal Antibody detects endogenous levels of MEK-7 protein only when phosphorylated at S271.
Immunogen Sequence	



Immunohistochemistry analysis of paraffin-embedded human brain, using MAP2K7 (Phospho-Ser271) Antibody. The picture on the right is blocked with the phospho peptide.



Western blot analysis of lysates from NIH/3T3 cells treated with insulin 0.01U/ml 15' and NIH/3T3 cells treated with EGF 200ng/ml 30', using MAP2K7 (Phospho-Ser271) Antibody. The lane on the right is blocked with the phospho peptide.



Western blot analysis of 3T3 cells using Phospho-MEK-7 (S271) Polyclonal Antibody