

Anti-Phospho-MAP2K3-Thr222 antibody (188-237 aa) (STJ90949)

STJ90949

GENERAL INFORMATION

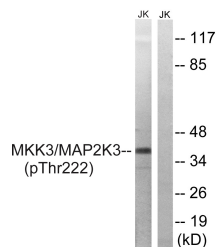
Product Type	Primary antibodies
Short Description	Rabbit polyclonal antibody anti-Phospho-Dual specificity mitogen-activated protein kinase kinase 3-Thr222 (188-237 aa) is suitable for use in Western Blot, Immunohistochemistry, Immunofluorescence and ELISA research applications.
Applications	WB/IHC/IF/ELISA
Host/Source	Rabbit
Reactivity	Human/Mouse/Rat

PRODUCT PROPERTIES

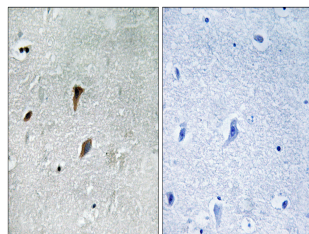
Clonality	Polyclonal
Clone ID	
Concentration	1 mg/mL
Conjugation	Unconjugated
Purification	The antibody was affinity-purified from rabbit antiserum by affinity-chromatography using epitope-specific immunogen.
Dilution	WB 1:500-1:2000
Range	IHC 1:100-1:300 ELISA 1:5000 IF 1:50-200
Formulation	Liquid in PBS containing 50% Glycerol, 0.5% BSA and 0.02% Sodium Azide.
Isotype	IgG
Storage Instruction	Store at -20°C for up to 1 year from the date of receipt, and avoid repeat freeze-thaw cycles.

TARGET INFORMATION

Gene ID	5606
Gene Symbol	MAP2K3
Uniprot ID	MP2K3_HUMAN
Immunogen	The antiserum was produced against synthesized peptide derived from the human MAP2K3 around the phosphorylation site of Thr222 at the amino acid range 188-237
Immunogen Region	188-237 aa
Specificity	Phospho-MEK-3 (T222) Polyclonal Antibody detects endogenous levels of MEK-3 protein only when phosphorylated at T222.
Immunogen Sequence	



Western blot analysis of lysates from Jurkat cells treated with serum 20% 15', using MAP2K3 (Phospho-Thr222) Antibody. The lane on the right is blocked with the phospho peptide.



Immunohistochemistry analysis of paraffin-embedded human brain, using MAP2K3 (Phospho-Thr222) Antibody. The picture on the right is blocked with the phospho peptide.

This product is suitable for in-vitro studies under the RESEARCH USE ONLY [RUO] licence. This product must not be used as for diagnostic or other medical purposes.
St John's Laboratory Ltd, Knowledge Dock Business Centre, University Way, London, E16 2RD | Tel: 0208 223 3081