

Anti-Phospho-FLT3-Tyr969 antibody (935-984 aa) (STJ90944)

STJ90944

GENERAL INFORMATION

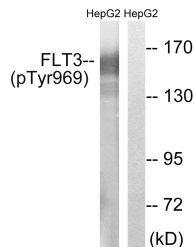
Product Type	Primary antibodies
Short Description	Rabbit polyclonal antibody anti-Phospho-Receptor-type tyrosine-protein kinase FLT3-Tyr969 (935-984 aa) is suitable for use in Western Blot, Immunohistochemistry, Immunofluorescence and ELISA research applications.
Applications	WB/IHC/IF/ELISA
Host/Source	Rabbit
Reactivity	Human/Rat/Mouse

PRODUCT PROPERTIES

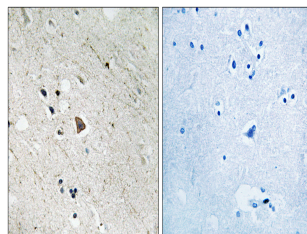
Clonality	Polyclonal
Clone ID	
Concentration	1 mg/mL
Conjugation	Unconjugated
Purification	The antibody was affinity-purified from rabbit antiserum by affinity-chromatography using epitope-specific immunogen.
Dilution Range	WB 1:500-1:2000 IHC 1:100-1:300 ELISA 1:5000 IF 1:50-200
Formulation	Liquid in PBS containing 50% Glycerol, 0.5% BSA and 0.02% Sodium Azide.
Isotype	IgG
Storage Instruction	Store at -20°C for up to 1 year from the date of receipt, and avoid repeat freeze-thaw cycles.

TARGET INFORMATION

Gene ID	2322
Gene Symbol	FLT3
Uniprot ID	FLT3_HUMAN
Immunogen	The antiserum was produced against synthesized peptide derived from the human FLT3 around the phosphorylation site of Tyr969 at the amino acid range 935-984
Immunogen Region	935-984 aa
Specificity	Phospho-Flt-3 (Y969) Polyclonal Antibody detects endogenous levels of Flt-3 protein only when phosphorylated at Y969.
Immunogen Sequence	



Western blot analysis of lysates from HepG2 cells treated with Na₃VO₄ 0.3mM 40', using FLT3 (Phospho-Tyr969) Antibody. The lane on the right is blocked with the phospho peptide.



Immunohistochemistry analysis of paraffin-embedded human brain, using FLT3 (Phospho-Tyr969) Antibody. The picture on the right is blocked with the phospho peptide.