

Anti-Phospho-BRAF-Ser446 antibody (411-460 aa) (STJ90940)

STJ90940

GENERAL INFORMATION

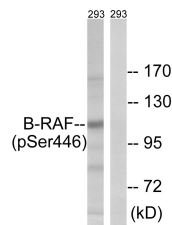
Product Type	Primary antibodies
Short Description	Rabbit polyclonal antibody anti-Phospho-Serine/threonine-protein kinase B-raf-Ser446 (411-460 aa) is suitable for use in Western Blot, Immunohistochemistry, Immunofluorescence and ELISA research applications.
Applications	WB/IHC/IF/ELISA
Host/Source	Rabbit
Reactivity	Human/Mouse

PRODUCT PROPERTIES

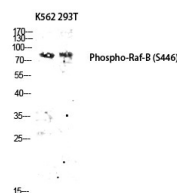
Clonality	Polyclonal
Clone ID	
Concentration	1 mg/mL
Conjugation	Unconjugated
Purification	The antibody was affinity-purified from rabbit antiserum by affinity-chromatography using epitope-specific immunogen.
Dilution	WB 1:500-1:2000
Range	IHC 1:100-1:300 ELISA 1:10000 IF 1:50-200
Formulation	Liquid in PBS containing 50% Glycerol, 0.5% BSA and 0.02% Sodium Azide.
Isotype	IgG
Storage Instruction	Store at -20°C for up to 1 year from the date of receipt, and avoid repeat freeze-thaw cycles.

TARGET INFORMATION

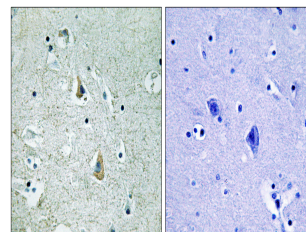
Gene ID	673
Gene Symbol	BRAF
Uniprot ID	BRAF_HUMAN
Immunogen	The antiserum was produced against synthesized peptide derived from the human B-RAF around the phosphorylation site of Ser446 at the amino acid range 411-460
Immunogen Region	411-460 aa
Specificity	Phospho-Raf-B (S446) Polyclonal Antibody detects endogenous levels of Raf-B protein only when phosphorylated at S446.
Immunogen Sequence	



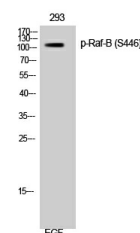
Western blot analysis of lysates from 293 cells treated with EGF 200ng/ml 30', using B-RAF (Phospho-Ser446) Antibody. The lane on the right is blocked with the phospho peptide.



Western blot analysis of K562 293T lysis using Phospho-Raf-B (S446) antibody. Antibody was diluted at 1:1000.



Immunohistochemistry analysis of paraffin-embedded human brain, using B-RAF (Phospho-Ser446) Antibody. The picture on the right is blocked with the phospho peptide.



Western blot analysis of 293 cells using Phospho-Raf-B (S446) Polyclonal Antibody diluted at 1:1000.

This product is suitable for in-vitro studies under the RESEARCH USE ONLY [RUO] licence. This product must not be used as for diagnostic or other medical purposes.
St John's Laboratory Ltd, Knowledge Dock Business Centre, University Way, London, E16 2RD | Tel: 0208 223 3081