

Anti-Phospho-AXL-Tyr691 antibody (657-706 aa) (STJ90939)

STJ90939

GENERAL INFORMATION

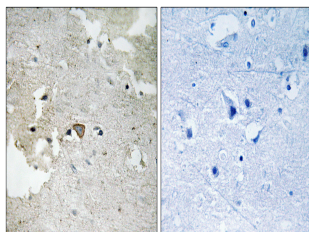
| | |
|--------------------------|---|
| Product Type | Primary antibodies |
| Short Description | Rabbit polyclonal antibody anti-Phospho-Tyrosine-protein kinase receptor UFO-Tyr691 (657-706 aa) is suitable for use in Western Blot, Immunohistochemistry, Immunofluorescence and ELISA research applications. |
| Applications | WB/IHC/IF/ELISA |
| Host/Source | Rabbit |
| Reactivity | Human/Mouse/Rat |

PRODUCT PROPERTIES

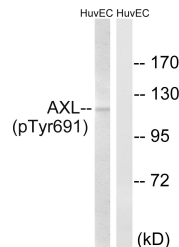
| | |
|----------------------------|---|
| Clonality | Polyclonal |
| Clone ID | |
| Concentration | 1 mg/mL |
| Conjugation | Unconjugated |
| Purification | The antibody was affinity-purified from rabbit antiserum by affinity-chromatography using epitope-specific immunogen. |
| Dilution Range | WB 1:500-1:2000 IHC 1:100-1:300 ELISA 1:20000 IF 1:50-200 |
| Formulation | Liquid in PBS containing 50% Glycerol, 0.5% BSA and 0.02% Sodium Azide. |
| Isotype | IgG |
| Storage Instruction | Store at -20°C for up to 1 year from the date of receipt, and avoid repeat freeze-thaw cycles. |

TARGET INFORMATION

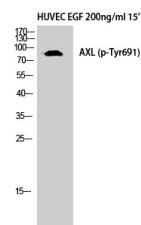
| | |
|---------------------------|---|
| Gene ID | 558 |
| Gene Symbol | AXL |
| Uniprot ID | UFO_HUMAN |
| Immunogen | The antiserum was produced against synthesized peptide derived from the human AXL around the phosphorylation site of Tyr691 at the amino acid range 657-706 |
| Immunogen Region | 657-706 aa |
| Specificity | Phospho-Axl (Y691) Polyclonal Antibody detects endogenous levels of Axl protein only when phosphorylated at Y691. |
| Immunogen Sequence | |



Immunohistochemistry analysis of paraffin-embedded human brain, using AXL (Phospho-Tyr691) Antibody. The picture on the right is blocked with the phospho peptide.



Western blot analysis of lysates from HuvEC cells treated with EGF 200ng/ml 15', using AXL (Phospho-Tyr691) Antibody. The lane on the right is blocked with the phospho peptide.



Western blot analysis of HuvEc cells using Phospho-Axl (Y691) Polyclonal Antibody diluted at 1:10,000