

Anti-Phospho-NF2-Ser10 antibody (1-50 aa) (STJ90932)

STJ90932

GENERAL INFORMATION

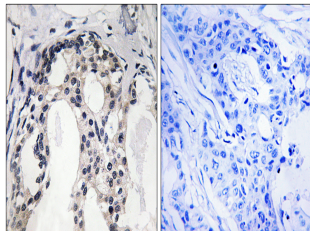
Product Type	Primary antibodies
Short Description	Rabbit polyclonal antibody anti-Phospho-Merlin-Ser10 (1-50 aa) is suitable for use in Western Blot, Immunohistochemistry, Immunofluorescence and ELISA research applications.
Applications	WB/IHC/IF/ELISA
Host/Source	Rabbit
Reactivity	Human/Mouse/Rat

PRODUCT PROPERTIES

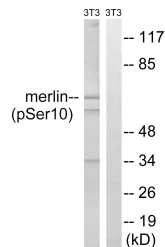
Clonality	Polyclonal
Clone ID	
Concentration	1 mg/mL
Conjugation	Unconjugated
Purification	The antibody was affinity-purified from rabbit antiserum by affinity-chromatography using epitope-specific immunogen.
Dilution Range	WB 1:500-1:2000 IHC 1:100-1:300 ELISA 1:5000 IF 1:50-200
Formulation	Liquid in PBS containing 50% Glycerol, 0.5% BSA and 0.02% Sodium Azide.
Isotype	IgG
Storage Instruction	Store at -20°C for up to 1 year from the date of receipt, and avoid repeat freeze-thaw cycles.

TARGET INFORMATION

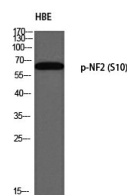
Gene ID	4771
Gene Symbol	NF2
Uniprot ID	MERL_HUMAN
Immunogen	The antiserum was produced against synthesized peptide derived from the human Merlin around the phosphorylation site of Ser10 at the amino acid range 1-50
Immunogen Region	1-50 aa
Specificity	Phospho-NF2 (S10) Polyclonal Antibody detects endogenous levels of NF2 protein only when phosphorylated at S10.
Immunogen Sequence	



Immunohistochemistry analysis of paraffin-embedded human breast carcinoma, using Merlin (Phospho-Ser10) Antibody. The picture on the right is blocked with the phospho peptide.



Western blot analysis of lysates from NIH/3T3 cells treated with IFN 2500U/ml 30', using Merlin (Phospho-Ser10) Antibody. The lane on the right is blocked with the phospho peptide.



Western blot analysis of HBE using p-NF2 (S10) antibody. Antibody was diluted at 1:500