

## Anti-Phospho-FOXO4-Ser262 antibody (228-277 aa) (STJ90930)

STJ90930

### GENERAL INFORMATION

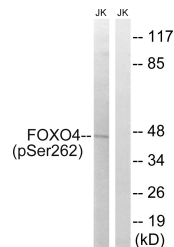
|                          |  |
|--------------------------|--|
| <b>Product Type</b>      | Primary antibodies   |
| <b>Short Description</b> | Rabbit polyclonal antibody anti-Phospho-Forkhead box protein O4-Ser262 (228-277 aa) is suitable for use in Western Blot, Immunohistochemistry, Immunofluorescence and ELISA research applications. |
| <b>Applications</b>      | WB/IHC/IF/ELISA  |
| <b>Host/Source</b>       | Rabbit   |
| <b>Reactivity</b>        | Human/Mouse  |

### PRODUCT PROPERTIES

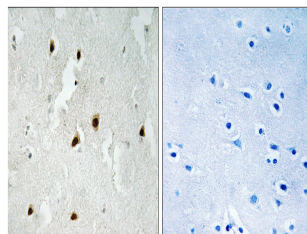
|                            |   |
|----------------------------|---|
| <b>Clonality</b>           | Polyclonal  |
| <b>Clone ID</b>            |   |
| <b>Concentration</b>       | 1 mg/mL   |
| <b>Conjugation</b>         | Unconjugated  |
| <b>Purification</b>        | The antibody was affinity-purified from rabbit antiserum by affinity-chromatography using epitope-specific immunogen. |
| <b>Dilution Range</b>      | WB 1:500-1:2000<br>IHC 1:100-1:300<br>ELISA 1:10000<br>IF 1:50-200  |
| <b>Formulation</b>         | Liquid in PBS containing 50% Glycerol, 0.5% BSA and 0.02% Sodium Azide.   |
| <b>Isotype</b>             | IgG   |
| <b>Storage Instruction</b> | Store at -20°C for up to 1 year from the date of receipt, and avoid repeat freeze-thaw cycles.                        |

### TARGET INFORMATION

|                           |   |
|---------------------------|---|
| <b>Gene ID</b>            | 4303  |
| <b>Gene Symbol</b>        | FOXO4   |
| <b>Uniprot ID</b>         | FOXO4_HUMAN   |
| <b>Immunogen</b>          | The antiserum was produced against synthesized peptide derived from the human FOXO4 around the phosphorylation site of Ser262 at the amino acid range 228-277 |
| <b>Immunogen Region</b>   | 228-277 aa  |
| <b>Specificity</b>        | Phospho-FoxO4 (S262) Polyclonal Antibody detects endogenous levels of FoxO4 protein only when phosphorylated at S262.   |
| <b>Immunogen Sequence</b> |   |



Western blot analysis of lysates from Jurkat cells treated with starved 24h, using FOXO4 (Phospho-Ser262) Antibody. The lane on the right is blocked with the phospho peptide.



Immunohistochemistry analysis of paraffin-embedded human brain, using FOXO4 (Phospho-Ser262) Antibody. The picture on the right is blocked with the phospho peptide.