

Anti-Phospho-CDC25A-Ser178 antibody (144-193 aa) (STJ90929)

STJ90929

GENERAL INFORMATION

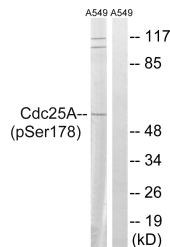
Product Type	Primary antibodies
Short Description	Rabbit polyclonal antibody anti-Phospho-M-phase inducer phosphatase 1-Ser178 (144-193 aa) is suitable for use in Western Blot, Immunohistochemistry, Immunofluorescence and ELISA research applications.
Applications	WB/IHC/IF/ELISA
Host/Source	Rabbit
Reactivity	Human/Mouse/Rat

PRODUCT PROPERTIES

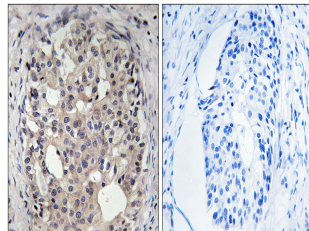
Clonality	Polyclonal
Clone ID	
Concentration	1 mg/mL
Conjugation	Unconjugated
Purification	The antibody was affinity-purified from rabbit antiserum by affinity-chromatography using epitope-specific immunogen.
Dilution Range	WB 1:500-1:2000 IHC 1:100-1:300 ELISA 1:10000 IF 1:50-200
Formulation	Liquid in PBS containing 50% Glycerol, 0.5% BSA and 0.02% Sodium Azide.
Isotype	IgG
Storage Instruction	Store at -20°C for up to 1 year from the date of receipt, and avoid repeat freeze-thaw cycles.

TARGET INFORMATION

Gene ID	993
Gene Symbol	CDC25A
Uniprot ID	MPIP1_HUMAN
Immunogen	The antiserum was produced against synthesized peptide derived from the human CDC25A around the phosphorylation site of Ser178 at the amino acid range 144-193
Immunogen Region	144-193 aa
Specificity	Phospho-Cdc25A (S178) Polyclonal Antibody detects endogenous levels of Cdc25A protein only when phosphorylated at S178.
Immunogen Sequence	



Western blot analysis of lysates from A549 cells treated with UV 15' using CDC25A (Phospho-Ser178) Antibody. The lane on the right is blocked with the phospho peptide.



Immunohistochemistry analysis of paraffin-embedded human breast carcinoma, using CDC25A (Phospho-Ser178) Antibody. The picture on the right is blocked with the phospho peptide.