

Anti-Phospho-PDCD4-Ser457 antibody (420-469 aa) (STJ90921)

STJ90921

GENERAL INFORMATION

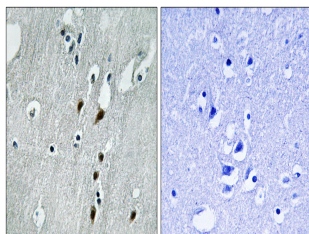
Product Type	Primary antibodies
Short Description	Rabbit polyclonal antibody anti-Phospho-Programmed cell death protein 4-Ser457 (420-469 aa) is suitable for use in Western Blot, Immunohistochemistry, Immunofluorescence and ELISA research applications.
Applications	WB/IHC/IF/ELISA
Host/Source	Rabbit
Reactivity	Human/Mouse/Rat

PRODUCT PROPERTIES

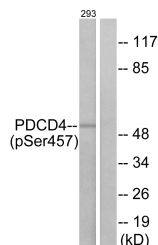
Clonality	Polyclonal
Clone ID	
Concentration	1 mg/mL
Conjugation	Unconjugated
Purification	The antibody was affinity-purified from rabbit antiserum by affinity-chromatography using epitope-specific immunogen.
Dilution	WB 1:500-1:2000
Range	IHC 1:100-1:300 ELISA 1:10000 IF 1:50-200
Formulation	Liquid in PBS containing 50% Glycerol, 0.5% BSA and 0.02% Sodium Azide.
Isotype	IgG
Storage Instruction	Store at -20°C for up to 1 year from the date of receipt, and avoid repeat freeze-thaw cycles.

TARGET INFORMATION

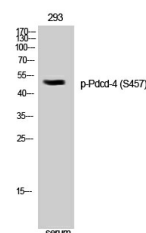
Gene ID	27250
Gene Symbol	PDCD4
Uniprot ID	PDCD4_HUMAN
Immunogen	The antiserum was produced against synthesized peptide derived from the human PDCD4 around the phosphorylation site of Ser457 at the amino acid range 420-469
Immunogen Region	420-469 aa
Specificity	Phospho-Pcd-4 (S457) Polyclonal Antibody detects endogenous levels of Pcd-4 protein only when phosphorylated at S457.
Immunogen Sequence	



Immunohistochemistry analysis of paraffin-embedded human brain, using PDCD4 (Phospho-Ser457) Antibody. The picture on the right is blocked with the phospho peptide.



Western blot analysis of lysates from 293 cells treated with serum 20% 15', using PDCD4 (Phospho-Ser457) Antibody. The lane on the right is blocked with the phospho peptide.



Western blot analysis of 293 cells using Phospho-Pcd-4 (S457) Polyclonal Antibody