

Anti-Phospho-NFKBIA-Tyr305 antibody (268-317 aa) (STJ90912)

STJ90912

GENERAL INFORMATION

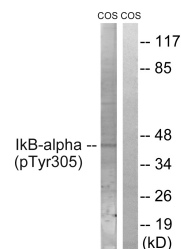
Product Type	Primary antibodies
Short Description	Rabbit polyclonal antibody anti-Phospho-NF-kappa-B inhibitor alpha-Tyr305 (268-317 aa) is suitable for use in Western Blot, Immunohistochemistry, Immunofluorescence and ELISA research applications.
Applications	WB/IHC/IF/ELISA
Host/Source	Rabbit
Reactivity	Human/Mouse/Rat/Monkey

PRODUCT PROPERTIES

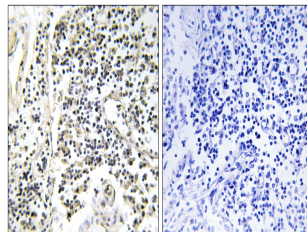
Clonality	Polyclonal
Clone ID	
Concentration	1 mg/mL
Conjugation	Unconjugated
Purification	The antibody was affinity-purified from rabbit antiserum by affinity-chromatography using epitope-specific immunogen.
Dilution	WB 1:500-1:2000
Range	IHC 1:100-1:300 ELISA 1:5000 IF 1:50-200
Formulation	Liquid in PBS containing 50% Glycerol, 0.5% BSA and 0.02% Sodium Azide.
Isotype	IgG
Storage Instruction	Store at -20°C for up to 1 year from the date of receipt, and avoid repeat freeze-thaw cycles.

TARGET INFORMATION

Gene ID	4792
Gene Symbol	NFKBIA
Uniprot ID	IKBA_HUMAN
Immunogen	The antiserum was produced against synthesized peptide derived from the human IkappaB-alpha around the phosphorylation site of Tyr305 at the amino acid range 268-317
Immunogen Region	268-317 aa
Specificity	Phospho-I Kappa B-Alpha (Y305) Polyclonal Antibody detects endogenous levels of I Kappa B-Alpha protein only when phosphorylated at Y305.
Immunogen Sequence	



Western blot analysis of lysates from COS7 cells treated with nocodazole 1µg/ml 16h, using IkappaB-alpha (Phospho-Tyr305) Antibody. The lane on the right is blocked with the phospho peptide.



Immunohistochemistry analysis of paraffin-embedded human lymph node, using IkappaB-alpha (Phospho-Tyr305) Antibody. The picture on the right is blocked with the phospho peptide.