

Anti-Phospho-RPA2-Thr21 antibody (10-59 aa) (STJ90903)

STJ90903

GENERAL INFORMATION

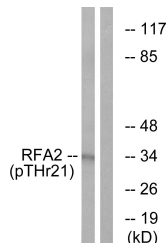
Product Type	Primary antibodies
Short Description	Rabbit polyclonal antibody anti-Phospho-Replication protein A 32 kDa subunit-Thr21 (10-59 aa) is suitable for use in Western Blot, Immunohistochemistry, Immunofluorescence and ELISA research applications.
Applications	WB/IHC/IF/ELISA
Host/Source	Rabbit
Reactivity	Human/Mouse

PRODUCT PROPERTIES

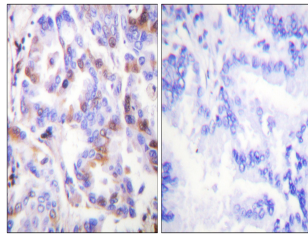
Clonality	Polyclonal
Clone ID	
Concentration	1 mg/mL
Conjugation	Unconjugated
Purification	The antibody was affinity-purified from rabbit antiserum by affinity-chromatography using epitope-specific immunogen.
Dilution Range	WB 1:500-1:2000 IHC 1:100-1:300 ELISA 1:10000 IF 1:50-200
Formulation	Liquid in PBS containing 50% Glycerol, 0.5% BSA and 0.02% Sodium Azide.
Isotype	IgG
Storage Instruction	Store at -20°C for up to 1 year from the date of receipt, and avoid repeat freeze-thaw cycles.

TARGET INFORMATION

Gene ID	6118
Gene Symbol	RPA2
Uniprot ID	RFA2_HUMAN
Immunogen	The antiserum was produced against synthesized peptide derived from the human RFA2 around the phosphorylation site of Thr21 at the amino acid range 10-59
Immunogen Region	10-59 aa
Specificity	Phospho-RPA32 (T21) Polyclonal Antibody detects endogenous levels of RPA32 protein only when phosphorylated at T21.
Immunogen Sequence	



Western blot analysis of lysates from HeLa cells treated with Adriamycin 0.5ug/ml 24h, using RFA2 (Phospho-Thr21) Antibody. The lane on the right is blocked with the phospho peptide.



Immunohistochemistry analysis of paraffin-embedded human lung carcinoma, using RFA2 (Phospho-Thr21) Antibody. The picture on the right is blocked with the phospho peptide.