

Anti-Phospho-PTK2-Tyr397 antibody (363-412 aa) (STJ90899)

STJ90899

GENERAL INFORMATION

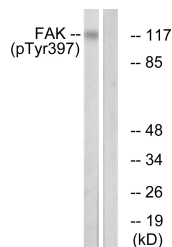
Product Type	Primary antibodies
Short Description	Rabbit polyclonal antibody anti-Phospho-Focal adhesion kinase 1-Tyr397 (363-412 aa) is suitable for use in Western Blot, Immunohistochemistry, Immunofluorescence and ELISA research applications.
Applications	WB/IHC/IF/ELISA
Host/Source	Rabbit
Reactivity	Human/Mouse/Rat

PRODUCT PROPERTIES

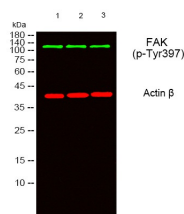
Clonality	Polyclonal
Clone ID	
Concentration	1 mg/mL
Conjugation	Unconjugated
Purification	The antibody was affinity-purified from rabbit antiserum by affinity-chromatography using epitope-specific immunogen.
Dilution	WB 1:500-1:2000
Range	IHC 1:100-1:300 ELISA 1:5000 IF 1:50-200
Formulation	Liquid in PBS containing 50% Glycerol, 0.5% BSA and 0.02% Sodium Azide.
Isotype	IgG
Storage Instruction	Store at -20°C for up to 1 year from the date of receipt, and avoid repeat freeze-thaw cycles.

TARGET INFORMATION

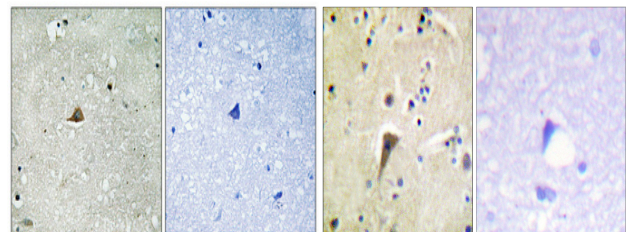
Gene ID	5747
Gene Symbol	PTK2
Uniprot ID	FAK1_HUMAN
Immunogen	The antiserum was produced against synthesized peptide derived from the human FAK around the phosphorylation site of Tyr397 at the amino acid range 363-412
Immunogen Region	363-412 aa
Specificity	Phospho-FAK (Y397) Polyclonal Antibody detects endogenous levels of FAK protein only when phosphorylated at Y397.
Immunogen Sequence	



Western blot analysis of lysates from Jurkat cells treated with Ca^{2+} 40nM 30', using FAK (Phospho-Tyr397) Antibody. The lane on the right is blocked with the phospho peptide.



Western blot analysis of lysates from 1) 293T, 2) AD293, 3) HeLa cells, 1/4 Green1/4 primary antibody was diluted at 1:1000, 4A°C over night, secondary antibody (cat: NA) was diluted at 1:10000, 37A°C 1hour. 1/4 Red1/4 Actin Beta monoclonal antibody (5D7) (cat: (STJ96930) antibody was diluted at 1:5000 as loading control, 4A°C over night, secondary antibody (cat: NA) was diluted at 1:10000, 37A°C 1hour.



Immunohistochemical analysis of paraffin-embedded Human brain. Antibody was diluted at 1:100 (4A°C overnight). High-pressure and temperature Tris-EDTA, pH9.0 was used for antigen retrieval. Negative control (right) obtained from antibody was pre-absorbed by immunogen peptide.

Immunohistochemistry analysis of paraffin-embedded human brain, using FAK (Phospho-Tyr397) Antibody. The picture on the right is blocked with the phospho peptide.

This product is suitable for in-vitro studies under the RESEARCH USE ONLY [RUO] licence. This product must not be used as for diagnostic or other medical purposes.

St John's Laboratory Ltd, Knowledge Dock Business Centre, University Way, London, E16 2RD | Tel: 0208 223 3081