

Anti-Phospho-CRYAB-Ser19 antibody (10-59 aa) (STJ90895)

STJ90895

GENERAL INFORMATION

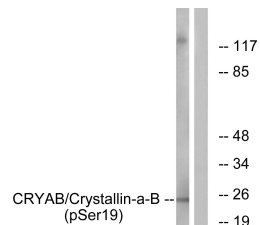
Product Type	Primary antibodies
Short Description	Rabbit polyclonal antibody anti-Phospho-Alpha-crystallin B chain-crystallin-Ser19 (10-59 aa) is suitable for use in Western Blot, Immunohistochemistry, Immunofluorescence and ELISA research applications.
Applications	WB/IHC/IF/ELISA
Host/Source	Rabbit
Reactivity	Human/Mouse/Rat

PRODUCT PROPERTIES

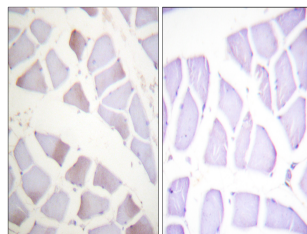
Clonality	Polyclonal
Clone ID	
Concentration	1 mg/mL
Conjugation	Unconjugated
Purification	The antibody was affinity-purified from rabbit antiserum by affinity-chromatography using epitope-specific immunogen.
Dilution Range	WB 1:500-1:2000 IHC 1:100-1:300 ELISA 1:10000 IF 1:50-200
Formulation	Liquid in PBS containing 50% Glycerol, 0.5% BSA and 0.02% Sodium Azide.
Isotype	IgG
Storage Instruction	Store at -20°C for up to 1 year from the date of receipt, and avoid repeat freeze-thaw cycles.

TARGET INFORMATION

Gene ID	1410
Gene Symbol	CRYAB
Uniprot ID	CRYAB_HUMAN
Immunogen	The antiserum was produced against synthesized peptide derived from the human CRYAB around the phosphorylation site of Ser19 at the amino acid range 10-59
Immunogen Region	10-59 aa
Specificity	Phospho-Crystallin-Alpha B (S19) Polyclonal Antibody detects endogenous levels of Crystallin-Alpha B protein only when phosphorylated at S19.
Immunogen Sequence	



Western blot analysis of lysates from HepG2 cells treated with nocodazole 1ug/ml 16h, using CRYAB (Phospho-Ser19) Antibody. The lane on the right is blocked with the phospho peptide.



Immunohistochemistry analysis of paraffin-embedded human skeletal muscle, using CRYAB (Phospho-Ser19) Antibody. The picture on the right is blocked with the phospho peptide.