

Anti-Phospho-F3-Ser290 antibody (246-295 aa) (STJ90893)

STJ90893

GENERAL INFORMATION

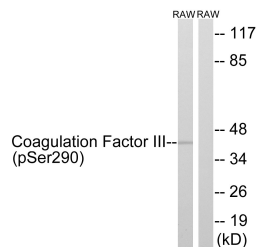
Product Type	Primary antibodies
Short Description	Rabbit polyclonal antibody anti-Phospho-Tissue factor-Ser290 (246-295 aa) is suitable for use in Western Blot, Immunohistochemistry, Immunofluorescence and ELISA research applications.
Applications	WB/IHC/IF/ELISA
Host/Source	Rabbit
Reactivity	Human/Rat/Mouse

PRODUCT PROPERTIES

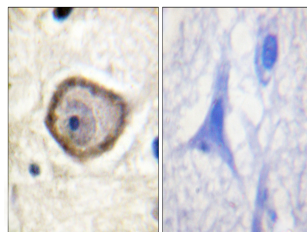
Clonality	Polyclonal
Clone ID	
Concentration	1 mg/mL
Conjugation	Unconjugated
Purification	The antibody was affinity-purified from rabbit antiserum by affinity-chromatography using epitope-specific immunogen.
Dilution Range	WB 1:500-1:2000 IHC 1:100-1:300 ELISA 1:20000 IF 1:50-200
Formulation	Liquid in PBS containing 50% Glycerol, 0.5% BSA and 0.02% Sodium Azide.
Isotype	IgG
Storage Instruction	Store at -20°C for up to 1 year from the date of receipt, and avoid repeat freeze-thaw cycles.

TARGET INFORMATION

Gene ID	2152
Gene Symbol	F3
Uniprot ID	TF_HUMAN
Immunogen	The antiserum was produced against synthesized peptide derived from the human Coagulation Factor III around the phosphorylation site of Ser290 at the amino acid range 246-295
Immunogen Region	246-295 aa
Specificity	Phospho-TF (S290) Polyclonal Antibody detects endogenous levels of TF protein only when phosphorylated at S290.
Immunogen Sequence	



Western blot analysis of lysates from RAW264.7 cells treated with TNF 20ng/ml 30', using Coagulation Factor III (Phospho-Ser290) Antibody. The lane on the right is blocked with the phospho peptide.



Immunohistochemistry analysis of paraffin-embedded human brain, using Coagulation Factor III (Phospho-Ser290) Antibody. The picture on the right is blocked with the phospho peptide.