

Anti-Phospho-CDK7-Thr170 antibody (136-185 aa) (STJ90891)

STJ90891

GENERAL INFORMATION

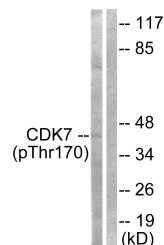
Product Type	Primary antibodies
Short Description	Rabbit polyclonal antibody anti-Phospho-Cyclin-dependent kinase 7-Thr170 (136-185 aa) is suitable for use in Western Blot, Immunohistochemistry, Immunofluorescence and ELISA research applications.
Applications	WB/IHC/IF/ELISA
Host/Source	Rabbit
Reactivity	Human/Mouse

PRODUCT PROPERTIES

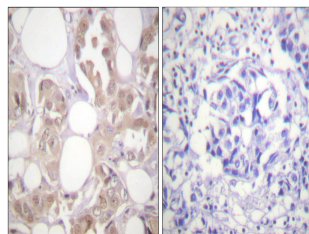
Clonality	Polyclonal
Clone ID	
Concentration	1 mg/mL
Conjugation	Unconjugated
Purification	The antibody was affinity-purified from rabbit antiserum by affinity-chromatography using epitope-specific immunogen.
Dilution	WB 1:500-1:2000
Range	IHC 1:100-1:300 ELISA 1:20000 IF 1:50-200
Formulation	Liquid in PBS containing 50% Glycerol, 0.5% BSA and 0.02% Sodium Azide.
Isotype	IgG
Storage Instruction	Store at -20°C for up to 1 year from the date of receipt, and avoid repeat freeze-thaw cycles.

TARGET INFORMATION

Gene ID	1022
Gene Symbol	CDK7
Uniprot ID	CDK7_HUMAN
Immunogen	The antiserum was produced against synthesized peptide derived from the human CDK7 around the phosphorylation site of Thr170 at the amino acid range 136-185
Immunogen Region	136-185 aa
Specificity	Phospho-Cdk7 (T170) Polyclonal Antibody detects endogenous levels of Cdk7 protein only when phosphorylated at T170.
Immunogen Sequence	



Western blot analysis of lysates from HeLa cells treated with Calyculin A 50nM 30', using CDK7 (Phospho-Thr170) Antibody. The lane on the right is blocked with the phospho peptide.



Immunohistochemistry analysis of paraffin-embedded human breast carcinoma, using CDK7 (Phospho-Thr170) Antibody. The picture on the right is blocked with the phospho peptide.