

## Anti-Phospho-CDC25B-Ser353 antibody (319-368 aa) (STJ90890)

STJ90890

### GENERAL INFORMATION

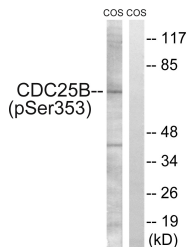
<b>Product Type</b>	Primary antibodies
<b>Short Description</b>	Rabbit polyclonal antibody anti-Phospho-M-phase inducer phosphatase 2-Ser353 (319-368 aa) is suitable for use in Western Blot, Immunohistochemistry, Immunofluorescence and ELISA research applications.
<b>Applications</b>	WB/IHC/IF/ELISA
<b>Host/Source</b>	Rabbit
<b>Reactivity</b>	Human/Monkey

### PRODUCT PROPERTIES

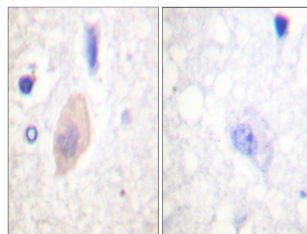
<b>Clonality</b>	Polyclonal
<b>Clone ID</b>	
<b>Concentration</b>	1 mg/mL
<b>Conjugation</b>	Unconjugated
<b>Purification</b>	The antibody was affinity-purified from rabbit antiserum by affinity-chromatography using epitope-specific immunogen.
<b>Dilution Range</b>	WB 1:500-1:2000 IHC 1:100-1:300 ELISA 1:40000 IF 1:50-200
<b>Formulation</b>	Liquid in PBS containing 50% Glycerol, 0.5% BSA and 0.02% Sodium Azide.
<b>Isotype</b>	IgG
<b>Storage Instruction</b>	Store at -20°C for up to 1 year from the date of receipt, and avoid repeat freeze-thaw cycles.

### TARGET INFORMATION

<b>Gene ID</b>	994
<b>Gene Symbol</b>	CDC25B
<b>Uniprot ID</b>	MPIP2_HUMAN
<b>Immunogen</b>	The antiserum was produced against synthesized peptide derived from the human CDC25B around the phosphorylation site of Ser353 at the amino acid range 319-368
<b>Immunogen Region</b>	319-368 aa
<b>Specificity</b>	Phospho-Cdc25B (S353) Polyclonal Antibody detects endogenous levels of Cdc25B protein only when phosphorylated at S353.
<b>Immunogen Sequence</b>	



Western blot analysis of lysates from COS7 cells treated with etoposide 25µM 24h, using CDC25B (Phospho-Ser353) Antibody. The lane on the right is blocked with the phospho peptide.



Immunohistochemistry analysis of paraffin-embedded human brain, using CDC25B (Phospho-Ser353) Antibody. The picture on the right is blocked with the phospho peptide.