

Anti-Phospho-APC-Ser2054 antibody (2020-2069 aa) (STJ90884)

STJ90884

GENERAL INFORMATION

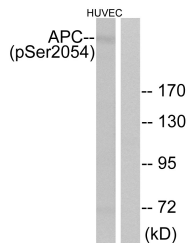
Product Type	Primary antibodies
Short Description	Rabbit polyclonal antibody anti-Phospho-Adenomatous polyposis coli protein-Ser2054 (2020-2069 aa) is suitable for use in Western Blot, Immunohistochemistry, Immunofluorescence and ELISA research applications.
Applications	WB/IHC/IF/ELISA
Host/Source	Rabbit
Reactivity	Human/Rat/Mouse

PRODUCT PROPERTIES

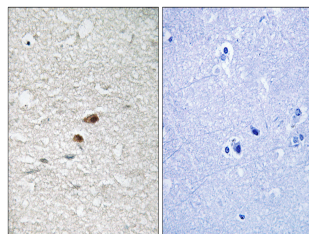
Clonality	Polyclonal
Clone ID	
Concentration	1 mg/mL
Conjugation	Unconjugated
Purification	The antibody was affinity-purified from rabbit antiserum by affinity-chromatography using epitope-specific immunogen.
Dilution	WB 1:500-1:2000
Range	IHC 1:100-1:300 ELISA 1:40000 IF 1:50-200
Formulation	Liquid in PBS containing 50% Glycerol, 0.5% BSA and 0.02% Sodium Azide.
Isotype	IgG
Storage Instruction	Store at -20°C for up to 1 year from the date of receipt, and avoid repeat freeze-thaw cycles.

TARGET INFORMATION

Gene ID	324
Gene Symbol	APC
Uniprot ID	APC_HUMAN
Immunogen	The antiserum was produced against synthesized peptide derived from the human APC around the phosphorylation site of Ser2054 at the amino acid range 2020-2069
Immunogen Region	2020-2069 aa
Specificity	Phospho-APC (S2054) Polyclonal Antibody detects endogenous levels of APC protein only when phosphorylated at S2054.
Immunogen Sequence	



Western blot analysis of lysates from HUVEC cells treated with PMA 125ng/ml 30', using APC (Phospho-Ser2054) Antibody. The lane on the right is blocked with the phospho peptide.



Immunohistochemistry analysis of paraffin-embedded human brain, using APC (Phospho-Ser2054) Antibody. The picture on the right is blocked with the phospho peptide.