

Anti-Phospho-MAPK14-Tyr323 antibody (288-337 aa) (STJ90878)

STJ90878

GENERAL INFORMATION

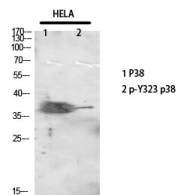
Product Type	Primary antibodies
Short Description	Rabbit polyclonal antibody anti-Phospho-Mitogen-activated protein kinase 14-Tyr323 (288-337 aa) is suitable for use in Immunofluorescence, Western Blot, Immunohistochemistry and ELISA research applications.
Applications	IF/WB/IHC/ELISA
Host/Source	Rabbit
Reactivity	Human/Mouse/Rat

PRODUCT PROPERTIES

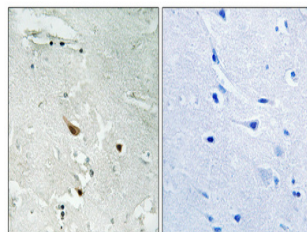
Clonality	Polyclonal
Clone ID	
Concentration	1 mg/mL
Conjugation	Unconjugated
Purification	The antibody was affinity-purified from rabbit antiserum by affinity-chromatography using epitope-specific immunogen.
Dilution	IF 1:50-200
Range	WB 1:500-1:2000 IHC 1:100-1:300 ELISA 1:5000
Formulation	Liquid in PBS containing 50% Glycerol, 0.5% BSA and 0.02% Sodium Azide.
Isotype	IgG
Storage Instruction	Store at -20°C for up to 1 year from the date of receipt, and avoid repeat freeze-thaw cycles.

TARGET INFORMATION

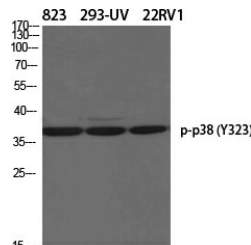
Gene ID	1432
Gene Symbol	MAPK14
Uniprot ID	MK14_HUMAN
Immunogen	The antiserum was produced against synthesized peptide derived from the human p38 MAPK around the phosphorylation site of Tyr322 at the amino acid range 288-337
Immunogen Region	288-337 aa
Specificity	Phospho-p38 (Y323) Polyclonal Antibody detects endogenous levels of p38 protein only when phosphorylated at Y323.
Immunogen Sequence	



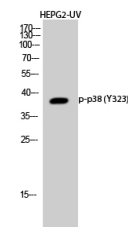
Western blot analysis of HELA using Phospho-p38 (Y323) Polyclonal Antibody. Antibody was diluted at 1:500



Immunohistochemical analysis of paraffin-embedded Human brain. Antibody was diluted at 1:100 (4A°C overnight). High-pressure and temperature Tris-EDTA, pH8.0 was used for antigen retrieval. Negative control (right) obtained from antibody was pre-absorbed by immunogen peptide.



Western blot analysis of various cells using Phospho-p38 (Y323) Polyclonal Antibody diluted at 1:1% 500



Western blot analysis of HEPG2-UV cells using Phospho-p38 (Y323) Polyclonal Antibody diluted at 1:1% 500

This product is suitable for in-vitro studies under the RESEARCH USE ONLY [RUO] licence. This product must not be used as for diagnostic or other medical purposes.
St John's Laboratory Ltd, Knowledge Dock Business Centre, University Way, London, E16 2RD | Tel: 0208 223 3081