

Anti-Phospho-ALOX5-Ser272 antibody (246-295 aa) (STJ90875)

STJ90875

GENERAL INFORMATION

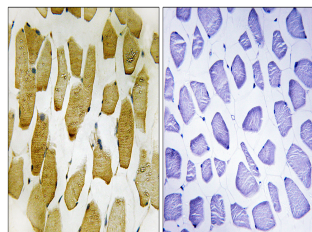
Product Type	Primary antibodies
Short Description	Rabbit polyclonal antibody anti-Phospho-Polyunsaturated fatty acid 5-lipoxygenase-Ser272 (246-295 aa) is suitable for use in Western Blot, Immunohistochemistry, Immunofluorescence and ELISA research applications.
Applications	WB/IHC/IF/ELISA
Host/Source	Rabbit
Reactivity	Human/Mouse/Rat

PRODUCT PROPERTIES

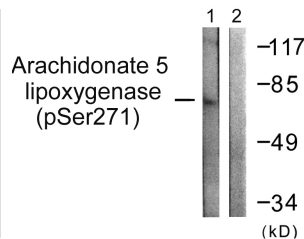
Clonality	Polyclonal
Clone ID	
Concentration	1 mg/mL
Conjugation	Unconjugated
Purification	The antibody was affinity-purified from rabbit antiserum by affinity-chromatography using epitope-specific immunogen.
Dilution Range	WB 1:500-1:2000 IHC 1:100-1:300 ELISA 1:10000 IF 1:50-200
Formulation	Liquid in PBS containing 50% Glycerol, 0.5% BSA and 0.02% Sodium Azide.
Isotype	IgG
Storage Instruction	Store at -20°C for up to 1 year from the date of receipt, and avoid repeat freeze-thaw cycles.

TARGET INFORMATION

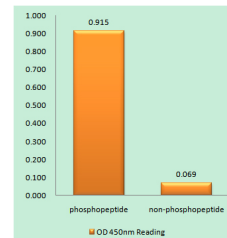
Gene ID	240
Gene Symbol	ALOX5
Uniprot ID	LOX5_HUMAN
Immunogen	The antiserum was produced against synthesized peptide derived from the human Arachidonate 5 Lipoxygenase around the phosphorylation site of Ser271 at the amino acid range 246-295
Immunogen Region	246-295 aa
Specificity	Phospho-5-LO (S272) Polyclonal Antibody detects endogenous levels of 5-LO protein only when phosphorylated at S272.
Immunogen Sequence	



Immunohistochemistry analysis of paraffin-embedded human skeletal muscle, using Arachidonate 5 Lipoygenase (Phospho-Ser271) Antibody. The picture on the right is blocked with the phospho peptide.



Western blot analysis of lysates from HUVEC cells, using Arachidonate 5 Lipoygenase (Phospho-Ser271) Antibody. The lane on the right is blocked with the phospho peptide.



Enzyme-Linked Immunosorbent Assay (Phospho-ELISA) for Immunogen Phosphopeptide (Phospho-left) and Non-Phosphopeptide (Phospho-right), using Arachidonate 5 Lipoygenase (Phospho-Ser271) Antibody