

Anti-Phospho-Ah Receptor-Ser36 antibody (2-51 aa) (STJ90873)

STJ90873

GENERAL INFORMATION

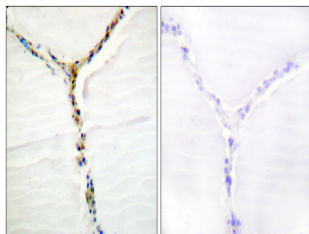
Product Type	Primary antibodies
Short Description	Rabbit polyclonal antibody anti-Phospho-Aryl hydrocarbon receptor and Aryl hydrocarbon receptor repressor-Ser36 (2-51 aa) is suitable for use in Western Blot, Immunohistochemistry, Immunofluorescence and ELISA research applications.
Applications	WB/IHC/IF/ELISA
Host/Source	Rabbit
Reactivity	Human/Mouse/Rat

PRODUCT PROPERTIES

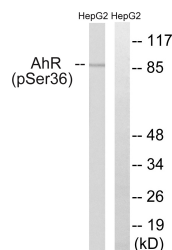
Clonality	Polyclonal
Clone ID	
Concentration	1 mg/mL
Conjugation	Unconjugated
Purification	The antibody was affinity-purified from rabbit antiserum by affinity-chromatography using epitope-specific immunogen.
Dilution	WB 1:500-1:2000
Range	IHC 1:100-1:300 ELISA 1:5000 IF 1:50-200
Formulation	Liquid in PBS containing 50% Glycerol, 0.5% BSA and 0.02% Sodium Azide.
Isotype	IgG
Storage Instruction	Store at -20°C for up to 1 year from the date of receipt, and avoid repeat freeze-thaw cycles.

TARGET INFORMATION

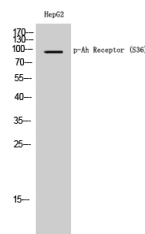
Gene ID	57491
	196
Gene Symbol	AHRR
	AHR
Uniprot ID	AHRR_HUMAN
	AHR_HUMAN
Immunogen	The antiserum was produced against synthesized peptide derived from the human AhR around the phosphorylation site of Ser36 at the amino acid range 2-51
Immunogen Region	2-51 aa
Specificity	Phospho-Ah Receptor (S36) Polyclonal Antibody detects endogenous levels of Ah Receptor protein only when phosphorylated at S36.
Immunogen Sequence	



Immunohistochemistry analysis of paraffin-embedded human thyroid gland, using AhR (Phospho-Ser36) Antibody. The picture on the right is blocked with the phospho peptide.



Western blot analysis of lysates from HepG2 cells, using AhR (Phospho-Ser36) Antibody. The lane on the right is blocked with the phospho peptide.



Western blot analysis of HepG2 cells using Phospho-Ah Receptor (S36) Polyclonal Antibody