

Anti-Phospho-ADRB2-Ser355/S356 antibody (331-380 aa) (STJ90872)

STJ90872

GENERAL INFORMATION

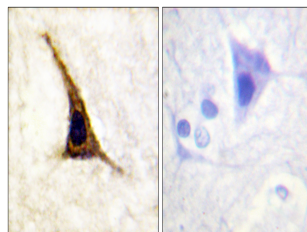
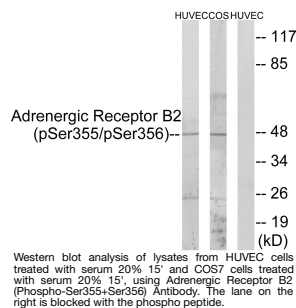
| | |
|--------------------------|--|
| Product Type | Primary antibodies |
| Short Description | Rabbit polyclonal antibody anti-Phospho-Beta-2 adrenergic receptor-Ser355/S356 (331-380 aa) is suitable for use in Western Blot, Immunohistochemistry, Immunofluorescence and ELISA research applications. |
| Applications | WB/IHC/IF/ELISA |
| Host/Source | Rabbit |
| Reactivity | Human/Mouse/Rat/Monkey |

PRODUCT PROPERTIES

| | |
|----------------------------|---|
| Clonality | Polyclonal |
| Clone ID | |
| Concentration | 1 mg/mL |
| Conjugation | Unconjugated |
| Purification | The antibody was affinity-purified from rabbit antiserum by affinity-chromatography using epitope-specific immunogen. |
| Dilution Range | WB 1:500-1:2000 IHC 1:100-1:300 ELISA 1:10000 IF 1:50-200 |
| Formulation | Liquid in PBS containing 50% Glycerol, 0.5% BSA and 0.02% Sodium Azide. |
| Isotype | IgG |
| Storage Instruction | Store at -20°C for up to 1 year from the date of receipt, and avoid repeat freeze-thaw cycles. |

TARGET INFORMATION

| | |
|---------------------------|---|
| Gene ID | 154 |
| Gene Symbol | ADRB2 |
| Uniprot ID | ADRB2_HUMAN |
| Immunogen | The antiserum was produced against synthesized peptide derived from the human Adrenergic Receptor B2 around the phosphorylation site of Ser355 and Ser356 at the amino acid range 331-380 |
| Immunogen Region | 331-380 aa |
| Specificity | Phospho-AR-Beta 2 (S355/S356) Polyclonal Antibody detects endogenous levels of AR-Beta 2 protein only when phosphorylated at S355/S356. |
| Immunogen Sequence | |



This product is suitable for in-vitro studies under the RESEARCH USE ONLY [RUO] licence. This product must not be used as for diagnostic or other medical purposes.
St John's Laboratory Ltd, Knowledge Dock Business Centre, University Way, London, E16 2RD | Tel: 0208 223 3081