

Anti-Phospho-YAP1-Ser127 antibody (93-142 aa) (STJ90868)

STJ90868

GENERAL INFORMATION

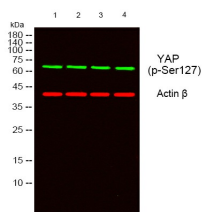
Product Type	Primary antibodies
Short Description	Rabbit polyclonal antibody anti-Phospho-Transcriptional coactivator YAP1-Ser127 (93-142 aa) is suitable for use in Immunofluorescence, Western Blot, Immunohistochemistry and ELISA research applications.
Applications	IF/WB/IHC/ELISA
Host/Source	Rabbit
Reactivity	Human/Mouse/Rat/Monkey

PRODUCT PROPERTIES

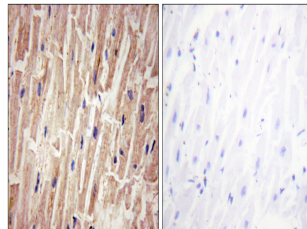
Clonality	Polyclonal
Clone ID	
Concentration	1 mg/mL
Conjugation	Unconjugated
Purification	The antibody was affinity-purified from rabbit antiserum by affinity-chromatography using epitope-specific immunogen.
Dilution	IF 1:50-200
Range	WB 1:500-1:2000 IHC 1:100-1:300 ELISA 1:40000
Formulation	Liquid in PBS containing 50% Glycerol, 0.5% BSA and 0.02% Sodium Azide.
Isotype	IgG
Storage Instruction	Store at -20°C for up to 1 year from the date of receipt, and avoid repeat freeze-thaw cycles.

TARGET INFORMATION

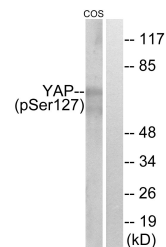
Gene ID	10413
Gene Symbol	YAP1
Uniprot ID	YAP1_HUMAN
Immunogen	The antiserum was produced against synthesized peptide derived from the human YAP around the phosphorylation site of Ser127 at the amino acid range 93-142
Immunogen Region	93-142 aa
Specificity	Phospho-YAP (S127) Polyclonal Antibody detects endogenous levels of YAP protein only when phosphorylated at S127.
Immunogen Sequence	



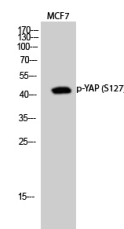
Western blot analysis of lysates from 1) MCF-7, 2) PC-3, 3) KB, 4) HELA cells. (Green) primary antibody was diluted at 1:1000, 4A°C over night, secondary antibody (cat: NA) was diluted at 1:10000, 37A°C 1hour. (Red) Actin Beta monoclonal antibody (5B7) (cat: ST-06830) antibody was diluted at 1:5000 as loading control, 4A°C over night, secondary antibody (cat: NA) was diluted at 1:10000, 37A°C 1hour.



Immunohistochemistry analysis of paraffin-embedded human heart, using YAP (Phospho-Ser127) Antibody. The picture on the right is blocked with the phospho peptide.



Western blot analysis of lysates from COS7 cells treated with HU 2mM 24h, using YAP (Phospho-Ser127) Antibody. The lane on the right is blocked with the phospho peptide.



Western blot analysis of MCF7 cells using Phospho-YAP (S127) Polyclonal Antibody diluted at 1:1x500 cells nucleus extracted by Minute TM Cytoplasmic and Nuclear Fractionation kit (SC-003, Inventiotech, MN, USA).

This product is suitable for in-vitro studies under the RESEARCH USE ONLY [RUO] licence. This product must not be used as for diagnostic or other medical purposes.

St John's Laboratory Ltd, Knowledge Dock Business Centre, University Way, London, E16 2RD | Tel: 0208 223 3081