

Anti-Phospho-PRKCQ-Thr538 antibody (504-553 aa) (STJ90865)

STJ90865

GENERAL INFORMATION

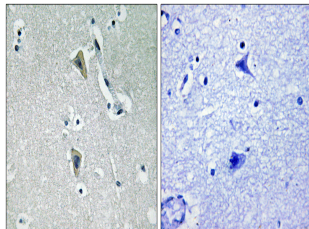
Product Type	Primary antibodies
Short Description	Rabbit polyclonal antibody anti-Phospho-Protein kinase C theta type-Thr538 (504-553 aa) is suitable for use in Western Blot, Immunohistochemistry, Immunofluorescence and ELISA research applications.
Applications	WB/IHC/IF/ELISA
Host/Source	Rabbit
Reactivity	Human/Mouse/Rat

PRODUCT PROPERTIES

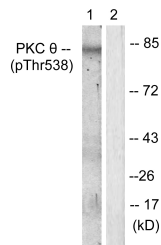
Clonality	Polyclonal
Clone ID	
Concentration	1 mg/mL
Conjugation	Unconjugated
Purification	The antibody was affinity-purified from rabbit antiserum by affinity-chromatography using epitope-specific immunogen.
Dilution	WB 1:500-1:2000
Range	IHC 1:100-1:300 ELISA 1:5000 IF 1:50-200
Formulation	Liquid in PBS containing 50% Glycerol, 0.5% BSA and 0.02% Sodium Azide.
Isotype	IgG
Storage Instruction	Store at -20°C for up to 1 year from the date of receipt, and avoid repeat freeze-thaw cycles.

TARGET INFORMATION

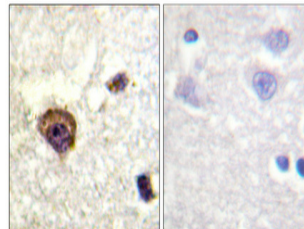
Gene ID	5588
Gene Symbol	PRKCQ
Uniprot ID	KPCT_HUMAN
Immunogen	The antiserum was produced against synthesized peptide derived from the human PKC theta around the phosphorylation site of Thr538 at the amino acid range 504-553
Immunogen Region	504-553 aa
Specificity	Phospho-PKC Theta (T538) Polyclonal Antibody detects endogenous levels of PKC Theta protein only when phosphorylated at T538.
Immunogen Sequence	



Immunohistochemistry analysis of paraffin-embedded human brain, using PKC theta (Phospho-Thr538) Antibody. The picture on the right is blocked with the phospho peptide.



Western blot analysis of lysates from Jurkat cells, using PKC theta (Phospho-Thr538) Antibody. The lane on the right is blocked with the phospho peptide.



Immunohistochemical analysis of paraffin-embedded Human brain. Antibody was diluted at 1:100 (4Å°C overnight). High-pressure and temperature Tris-EDTA, pH8.0 was used for antigen retrieval. Negative control (right) obtained from antibody was pre-absorbed by immunogen peptide.