

## Anti-Phospho-PIN1-Ser16 antibody (1-50 aa) (STJ90862)

STJ90862

### GENERAL INFORMATION

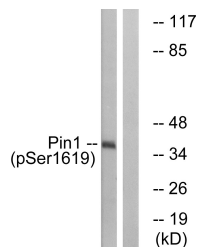
<b>Product Type</b>	Primary antibodies
<b>Short Description</b>	Rabbit polyclonal antibody anti-Phospho-Peptidyl-prolyl cis-trans isomerase NIMA-interacting 1-Ser16 (1-50 aa) is suitable for use in Western Blot, Immunohistochemistry, Immunofluorescence and ELISA research applications.
<b>Applications</b>	WB/IHC/IF/ELISA
<b>Host/Source</b>	Rabbit
<b>Reactivity</b>	Human/Mouse/Rat/Monkey

### PRODUCT PROPERTIES

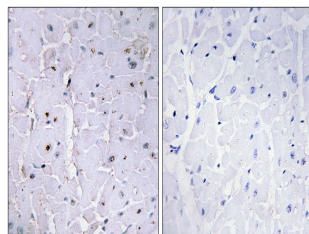
<b>Clonality</b>	Polyclonal
<b>Clone ID</b>	
<b>Concentration</b>	1 mg/mL
<b>Conjugation</b>	Unconjugated
<b>Purification</b>	The antibody was affinity-purified from rabbit antiserum by affinity-chromatography using epitope-specific immunogen.
<b>Dilution</b>	WB 1:500-1:2000
<b>Range</b>	IHC 1:100-1:300 ELISA 1:20000 IF 1:50-200
<b>Formulation</b>	Liquid in PBS containing 50% Glycerol, 0.5% BSA and 0.02% Sodium Azide.
<b>Isotype</b>	IgG
<b>Storage Instruction</b>	Store at -20°C for up to 1 year from the date of receipt, and avoid repeat freeze-thaw cycles.

### TARGET INFORMATION

<b>Gene ID</b>	5300
<b>Gene Symbol</b>	PIN1
<b>Uniprot ID</b>	PIN1_HUMAN
<b>Immunogen</b>	The antiserum was produced against synthesized peptide derived from the human Pin1 around the phosphorylation site of Ser16 at the amino acid range 1-50
<b>Immunogen Region</b>	1-50 aa
<b>Specificity</b>	Phospho-Pin1 (S16) Polyclonal Antibody detects endogenous levels of Pin1 protein only when phosphorylated at S16.
<b>Immunogen Sequence</b>	



Western blot analysis of lysates from COS7 cells treated with insulin 0.01U/ml 15', using Pin1 (Phospho-Ser16) Antibody. The lane on the right is blocked with the phospho peptide.



Immunohistochemistry analysis of paraffin-embedded human heart, using Pin1 (Phospho-Ser16) Antibody. The picture on the right is blocked with the phospho peptide.