

Anti-Phospho-PEA15-Ser104 antibody (70-119 aa) (STJ90861)

STJ90861

GENERAL INFORMATION

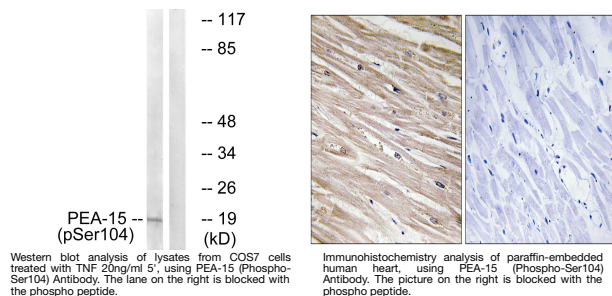
| | |
|--------------------------|--|
| Product Type | Primary antibodies |
| Short Description | Rabbit polyclonal antibody anti-Phospho-Astrocytic phosphoprotein PEA-15-Ser104 (70-119 aa) is suitable for use in Western Blot, Immunohistochemistry, Immunofluorescence and ELISA research applications. |
| Applications | WB/IHC/IF/ELISA |
| Host/Source | Rabbit |
| Reactivity | Human/Mouse/Rat/Monkey |

PRODUCT PROPERTIES

| | |
|----------------------------|---|
| Clonality | Polyclonal |
| Clone ID | |
| Concentration | 1 mg/mL |
| Conjugation | Unconjugated |
| Purification | The antibody was affinity-purified from rabbit antiserum by affinity-chromatography using epitope-specific immunogen. |
| Dilution | WB 1:500-1:2000 |
| Range | IHC 1:100-1:300 ELISA 1:20000 IF 1:50-200 |
| Formulation | Liquid in PBS containing 50% Glycerol, 0.5% BSA and 0.02% Sodium Azide. |
| Isotype | IgG |
| Storage Instruction | Store at -20°C for up to 1 year from the date of receipt, and avoid repeat freeze-thaw cycles. |

TARGET INFORMATION

| | |
|---------------------------|---|
| Gene ID | 8682 |
| Gene Symbol | PEA15 |
| Uniprot ID | PEA15_HUMAN |
| Immunogen | The antiserum was produced against synthesized peptide derived from the human PEA-15 around the phosphorylation site of Ser104 at the amino acid range 70-119 |
| Immunogen Region | 70-119 aa |
| Specificity | Phospho-PEA-15 (S104) Polyclonal Antibody detects endogenous levels of PEA-15 protein only when phosphorylated at S104. |
| Immunogen Sequence | |



This product is suitable for in-vitro studies under the RESEARCH USE ONLY [RUO] licence. This product must not be used as for diagnostic or other medical purposes.
St John's Laboratory Ltd, Knowledge Dock Business Centre, University Way, London, E16 2RD | Tel: 0208 223 3081