

Anti-Phospho-CHEK1-Ser296 antibody (266-315 aa) (STJ90849)

STJ90849

GENERAL INFORMATION

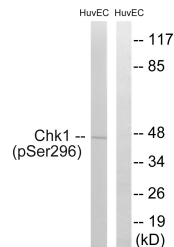
Product Type	Primary antibodies
Short Description	Rabbit polyclonal antibody anti-Phospho-Serine/threonine-protein kinase Chk1-Ser296 (266-315 aa) is suitable for use in Western Blot, Immunohistochemistry, Immunofluorescence and ELISA research applications.
Applications	WB/IHC/IF/ELISA
Host/Source	Rabbit
Reactivity	Human/Rat/Mouse

PRODUCT PROPERTIES

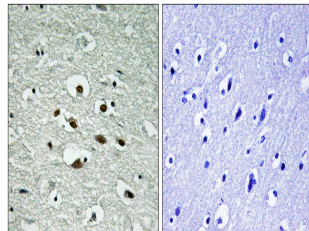
Clonality	Polyclonal
Clone ID	
Concentration	1 mg/mL
Conjugation	Unconjugated
Purification	The antibody was affinity-purified from rabbit antiserum by affinity-chromatography using epitope-specific immunogen.
Dilution	WB 1:500-1:2000
Range	IHC 1:100-1:300 ELISA 1:5000 IF 1:50-200
Formulation	Liquid in PBS containing 50% Glycerol, 0.5% BSA and 0.02% Sodium Azide.
Isotype	IgG
Storage Instruction	Store at -20°C for up to 1 year from the date of receipt, and avoid repeat freeze-thaw cycles.

TARGET INFORMATION

Gene ID	1111
Gene Symbol	CHEK1
Uniprot ID	CHK1_HUMAN
Immunogen	The antiserum was produced against synthesized peptide derived from the human Chk1 around the phosphorylation site of Ser296 at the amino acid range 266-315
Immunogen Region	266-315 aa
Specificity	Phospho-Chk1 (S296) Polyclonal Antibody detects endogenous levels of Chk1 protein only when phosphorylated at S296.
Immunogen Sequence	



Western blot analysis of lysates from HuvEC cells treated with UV 15', using Chk1 (Phospho-Ser296) Antibody. The lane on the right is blocked with the phospho peptide.



Immunohistochemistry analysis of paraffin-embedded human brain, using Chk1 (Phospho-Ser296) Antibody. The picture on the right is blocked with the phospho peptide.