

Anti-Phospho-AKT1-Tyr474 antibody (431-480 aa) (STJ90843)

STJ90843

GENERAL INFORMATION

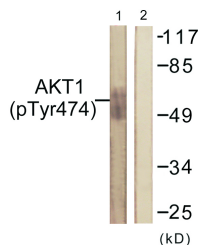
Product Type	Primary antibodies
Short Description	Rabbit polyclonal antibody anti-Phospho-RAC-alpha serine/threonine-protein kinase-Tyr474 (431-480 aa) is suitable for use in Western Blot, Immunohistochemistry, Immunofluorescence and ELISA research applications.
Applications	WB/IHC/IF/ELISA
Host/Source	Rabbit
Reactivity	Human/Mouse/Rat/Monkey

PRODUCT PROPERTIES

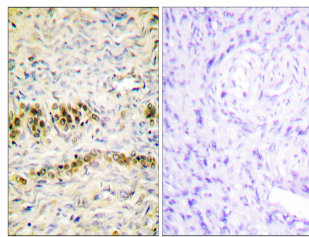
Clonality	Polyclonal
Clone ID	
Concentration	1 mg/mL
Conjugation	Unconjugated
Purification	The antibody was affinity-purified from rabbit antiserum by affinity-chromatography using epitope-specific immunogen.
Dilution	WB 1:500-1:2000
Range	IHC 1:100-1:300 ELISA 1:5000 IF 1:50-200
Formulation	Liquid in PBS containing 50% Glycerol, 0.5% BSA and 0.02% Sodium Azide.
Isotype	IgG
Storage Instruction	Store at -20°C for up to 1 year from the date of receipt, and avoid repeat freeze-thaw cycles.

TARGET INFORMATION

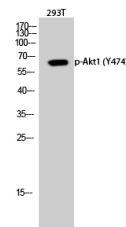
Gene ID	207
Gene Symbol	AKT1
Uniprot ID	AKT1_HUMAN
Immunogen	The antiserum was produced against synthesized peptide derived from the human Akt around the phosphorylation site of Tyr474 at the amino acid range 431-480
Immunogen Region	431-480 aa
Specificity	Phospho-Akt1 (Y474) Polyclonal Antibody detects endogenous levels of Akt1 protein only when phosphorylated at Y474.
Immunogen Sequence	



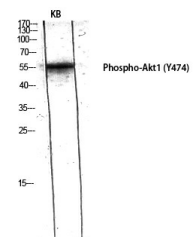
Western blot analysis of lysates from COS7 cells treated with UV 15' using Akt (Phospho-Tyr474) Antibody. The lane on the right is blocked with the phospho peptide.



Immunohistochemistry analysis of paraffin-embedded human ovary, using Akt (Phospho-Tyr474) Antibody. The picture on the right is blocked with the phospho peptide.



Western blot analysis of 293T cells using Phospho-Akt1 (Y474) Polyclonal Antibody diluted at 1/1000



Western blot analysis of KB using Phospho-Akt1 (Y474) Polyclonal Antibody diluted at 1/1000