

Anti-Phospho-WASF1-Tyr125 antibody (91-140 aa) (STJ90840)

STJ90840

GENERAL INFORMATION

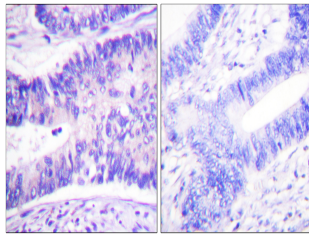
Product Type	Primary antibodies
Short Description	Rabbit polyclonal antibody anti-Phospho-Actin-binding protein WASF1-Tyr125 (91-140 aa) is suitable for use in Western Blot, Immunohistochemistry, Immunofluorescence and ELISA research applications.
Applications	WB/IHC/IF/ELISA
Host/Source	Rabbit
Reactivity	Human/Mouse/Rat

PRODUCT PROPERTIES

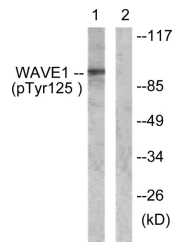
Clonality	Polyclonal
Clone ID	
Concentration	1 mg/mL
Conjugation	Unconjugated
Purification	The antibody was affinity-purified from rabbit antiserum by affinity-chromatography using epitope-specific immunogen.
Dilution	WB 1:500-1:2000
Range	IHC 1:100-1:300 IF 1:200-1:1000 ELISA 1:5000
Formulation	Liquid in PBS containing 50% Glycerol, 0.5% BSA and 0.02% Sodium Azide.
Isotype	IgG
Storage Instruction	Store at -20°C for up to 1 year from the date of receipt, and avoid repeat freeze-thaw cycles.

TARGET INFORMATION

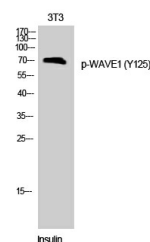
Gene ID	8936
Gene Symbol	WASF1
Uniprot ID	WASF1_HUMAN
Immunogen	The antiserum was produced against synthesized peptide derived from the human WAVE1 around the phosphorylation site of Tyr125 at the amino acid range 91-140
Immunogen Region	91-140 aa
Specificity	Phospho-WAVE1 (Y125) Polyclonal Antibody detects endogenous levels of WAVE1 protein only when phosphorylated at Y125.
Immunogen Sequence	



Immunohistochemistry analysis of paraffin-embedded human colon carcinoma, using WAVE1 (Phospho-Tyr125) Antibody. The picture on the right is blocked with the phospho peptide.



Western blot analysis of lysates from NIH/3T3 cells treated with Insulin 0.01U/ml 15', using WAVE1 (Phospho-Tyr125) Antibody. The lane on the right is blocked with the phospho peptide.



Western blot analysis of 3T3 cells using Phospho-WAVE1 (Y125) Polyclonal Antibody