

Anti-Phospho-TH-Ser8 antibody (2-51 aa) (STJ90837)

STJ90837

GENERAL INFORMATION

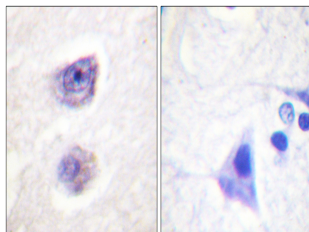
Product Type	Primary antibodies
Short Description	Rabbit polyclonal antibody anti-Phospho-TH-Ser8 (2-51 aa) is suitable for use in Western Blot, Immunohistochemistry, Immunofluorescence and ELISA research applications.
Applications	WB/IHC/IF/ELISA
Host/Source	Rabbit
Reactivity	Rat

PRODUCT PROPERTIES

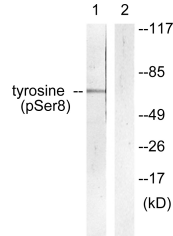
Clonality	Polyclonal
Clone ID	
Concentration	1 mg/mL
Conjugation	Unconjugated
Purification	The antibody was affinity-purified from rabbit antiserum by affinity-chromatography using epitope-specific immunogen.
Dilution Range	WB 1:500-1:2000 IHC 1:100-1:300 ELISA 1:5000 IF 1:50-200
Formulation	Liquid in PBS containing 50% Glycerol, 0.5% BSA and 0.02% Sodium Azide.
Isotype	IgG
Storage Instruction	Store at -20°C for up to 1 year from the date of receipt, and avoid repeat freeze-thaw cycles.

TARGET INFORMATION

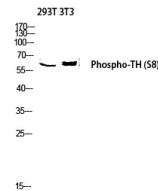
Gene ID	
Gene Symbol	
Uniprot ID	
Immunogen	The antiserum was produced against synthesized peptide derived from mouse Tyrosine Hydroxylase around the phosphorylation site of Ser8 at the amino acid range 2-51
Immunogen Region	2-51 aa
Specificity	Phospho-TH (S8) Polyclonal Antibody detects endogenous levels of TH protein only when phosphorylated at S8.
Immunogen Sequence	



Immunohistochemistry analysis of paraffin-embedded human brain, using Tyrosine Hydroxylase (Phospho-Ser8) Antibody. The picture on the right is blocked with the phospho peptide.



Western blot analysis of lysates from HepG2 cells treated with Anisomycin 25ug/ml 30', using Tyrosine Hydroxylase (Phospho-Ser8) Antibody. The lane on the right is blocked with the phospho peptide.



Western blot analysis of 293T 3T3 lysis using Phospho-TH (S8) antibody. Antibody was diluted at 1:1000