

Anti-Phospho-PEA15-Ser116 antibody (81-130 aa) (STJ90829)

STJ90829

GENERAL INFORMATION

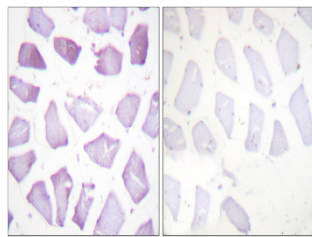
Product Type	Primary antibodies
Short Description	Rabbit polyclonal antibody anti-Phospho-Astrocytic phosphoprotein PEA-15-Ser116 (81-130 aa) is suitable for use in Western Blot, Immunohistochemistry, Immunofluorescence and ELISA research applications.
Applications	WB/IHC/IF/ELISA
Host/Source	Rabbit
Reactivity	Human/Mouse/Rat/Monkey

PRODUCT PROPERTIES

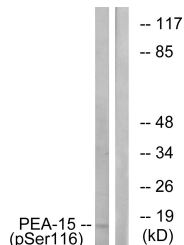
Clonality	Polyclonal
Clone ID	
Concentration	1 mg/mL
Conjugation	Unconjugated
Purification	The antibody was affinity-purified from rabbit antiserum by affinity-chromatography using epitope-specific immunogen.
Dilution Range	WB 1:500-1:2000 IHC 1:100-1:300 ELISA 1:5000 IF 1:50-200
Formulation	Liquid in PBS containing 50% Glycerol, 0.5% BSA and 0.02% Sodium Azide.
Isotype	IgG
Storage Instruction	Store at -20°C for up to 1 year from the date of receipt, and avoid repeat freeze-thaw cycles.

TARGET INFORMATION

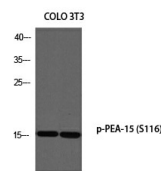
Gene ID	8682
Gene Symbol	PEA15
Uniprot ID	PEA15_HUMAN
Immunogen	The antiserum was produced against synthesized peptide derived from the human PEA-15 around the phosphorylation site of Ser116 at the amino acid range 81-130
Immunogen Region	81-130 aa
Specificity	Phospho-PEA-15 (S116) Polyclonal Antibody detects endogenous levels of PEA-15 protein only when phosphorylated at S116.
Immunogen Sequence	



Immunohistochemistry analysis of paraffin-embedded human skeletal muscle, using PEA-15 (Phospho-Ser116) Antibody. The picture on the right is blocked with the phospho peptide.



Western blot analysis of lysates from COS7 cells treated with INSULIN 0.01U/ML 15', using PEA-15 (Phospho-Ser116) Antibody. The lane on the right is blocked with the phospho peptide.



Western blot analysis of COLO 3T3 using p-PEA-15 (S116) antibody. Antibody was diluted at 1:500

This product is suitable for in-vitro studies under the RESEARCH USE ONLY [RUO] licence. This product must not be used as for diagnostic or other medical purposes.
St John's Laboratory Ltd, Knowledge Dock Business Centre, University Way, London, E16 2RD | Tel: 0208 223 3081