

Anti-Phospho-GRIN2B-Tyr1474 antibody (1435-1484 aa) (STJ90823)

STJ90823

GENERAL INFORMATION

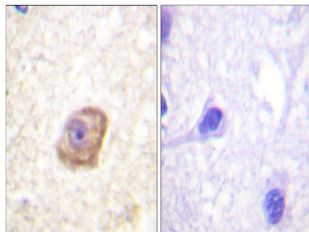
Product Type	Primary antibodies
Short Description	Rabbit polyclonal antibody anti-Phospho-Glutamate receptor ionotropic, NMDA 2B-Tyr1474 (1435-1484 aa) is suitable for use in Western Blot, Immunohistochemistry, Immunofluorescence and ELISA research applications.
Applications	WB/IHC/IF/ELISA
Host/Source	Rabbit
Reactivity	Human/Mouse/Rat

PRODUCT PROPERTIES

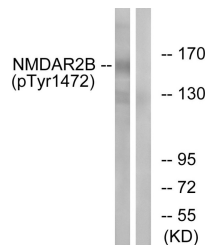
Clonality	Polyclonal
Clone ID	
Concentration	1 mg/mL
Conjugation	Unconjugated
Purification	The antibody was affinity-purified from rabbit antiserum by affinity-chromatography using epitope-specific immunogen.
Dilution	WB 1:500-1:2000
Range	IHC 1:100-1:300 ELISA 1:5000 IF 1:50-200
Formulation	Liquid in PBS containing 50% Glycerol, 0.5% BSA and 0.02% Sodium Azide.
Isotype	IgG
Storage Instruction	Store at -20°C for up to 1 year from the date of receipt, and avoid repeat freeze-thaw cycles.

TARGET INFORMATION

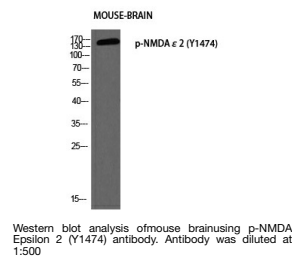
Gene ID	2904
Gene Symbol	GRIN2B
Uniprot ID	NMDE2_HUMAN
Immunogen	The antiserum was produced against synthesized peptide derived from the human NMDAR2B around the phosphorylation site of Tyr1474 at the amino acid range 1435-1484
Immunogen Region	1435-1484 aa
Specificity	Phospho-NMDA Epsilon 2 (Y1474) Polyclonal Antibody detects endogenous levels of NMDA Epsilon 2 protein only when phosphorylated at Y1474.
Immunogen Sequence	



Immunohistochemistry analysis of paraffin-embedded human brain, using NMDAR2B (Phospho-Tyr1474) Antibody. The picture on the right is blocked with the phospho peptide.



Western blot analysis of lysates from Jurkat cells treated with UV 15', using NMDAR2B (Phospho-Tyr1474) Antibody. The lane on the right is blocked with the phospho peptide.



Western blot analysis of mouse brain using p-NMDA Epsilon 2 (Y1474) antibody. Antibody was diluted at 1:500