

## Anti-Phospho-GRK2-Ser29 antibody (14-63 aa) (STJ90813)

STJ90813

### GENERAL INFORMATION

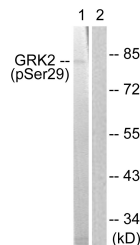
<b>Product Type</b>	Primary antibodies
<b>Short Description</b>	Rabbit polyclonal antibody anti-Phospho-Beta-adrenergic receptor kinase 1-Ser29 (14-63 aa) is suitable for use in Western Blot, Immunohistochemistry, Immunofluorescence and ELISA research applications.
<b>Applications</b>	WB/IHC/IF/ELISA
<b>Host/Source</b>	Rabbit
<b>Reactivity</b>	Human/Mouse/Rat

### PRODUCT PROPERTIES

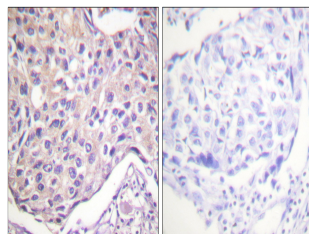
<b>Clonality</b>	Polyclonal
<b>Clone ID</b>	
<b>Concentration</b>	1 mg/mL
<b>Conjugation</b>	Unconjugated
<b>Purification</b>	The antibody was affinity-purified from rabbit antiserum by affinity-chromatography using epitope-specific immunogen.
<b>Dilution Range</b>	WB 1:500-1:2000 IHC 1:100-1:300 ELISA 1:10000 IF 1:50-200
<b>Formulation</b>	Liquid in PBS containing 50% Glycerol, 0.5% BSA and 0.02% Sodium Azide.
<b>Isotype</b>	IgG
<b>Storage Instruction</b>	Store at -20°C for up to 1 year from the date of receipt, and avoid repeat freeze-thaw cycles.

### TARGET INFORMATION

<b>Gene ID</b>	156
<b>Gene Symbol</b>	GRK2
<b>Uniprot ID</b>	ARBK1_HUMAN
<b>Immunogen</b>	The antiserum was produced against synthesized peptide derived from the human GRK2 around the phosphorylation site of Ser29 at the amino acid range 14-63
<b>Immunogen Region</b>	14-63 aa
<b>Specificity</b>	Phospho-GRK 2 (S29) Polyclonal Antibody detects endogenous levels of GRK 2 protein only when phosphorylated at S29.
<b>Immunogen Sequence</b>	



Western blot analysis of lysates from Jurkat cells treated with EGF 200ng/ml 30', using GRK2 (Phospho-Ser29) Antibody. The lane on the right is blocked with the phospho peptide.



Immunohistochemistry analysis of paraffin-embedded human breast carcinoma, using GRK2 (Phospho-Ser29) Antibody. The picture on the right is blocked with the phospho peptide.

This product is suitable for in-vitro studies under the RESEARCH USE ONLY [RUO] licence. This product must not be used as for diagnostic or other medical purposes.  
St John's Laboratory Ltd, Knowledge Dock Business Centre, University Way, London, E16 2RD | Tel: 0208 223 3081