

Anti-Phospho-AURKA-Thr288 antibody (256-305 aa) (STJ90805)

STJ90805

GENERAL INFORMATION

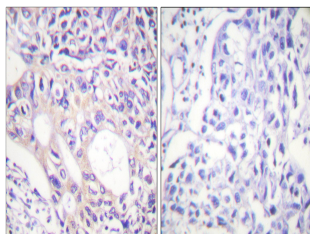
Product Type	Primary antibodies
Short Description	Rabbit polyclonal antibody anti-Phospho-Aurora kinase A-Thr288 (256-305 aa) is suitable for use in Western Blot, Immunohistochemistry, Immunofluorescence and ELISA research applications.
Applications	WB/IHC/IF/ELISA
Host/Source	Rabbit
Reactivity	Human/Mouse/Rat

PRODUCT PROPERTIES

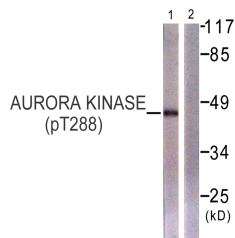
Clonality	Polyclonal
Clone ID	
Concentration	1 mg/mL
Conjugation	Unconjugated
Purification	The antibody was affinity-purified from rabbit antiserum by affinity-chromatography using epitope-specific immunogen.
Dilution Range	WB 1:500-1:2000 IHC 1:100-1:300 ELISA 1:5000 IF 1:50-200
Formulation	Liquid in PBS containing 50% Glycerol, 0.5% BSA and 0.02% Sodium Azide.
Isotype	IgG
Storage Instruction	Store at -20°C for up to 1 year from the date of receipt, and avoid repeat freeze-thaw cycles.

TARGET INFORMATION

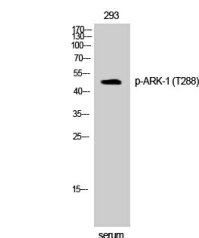
Gene ID	6790
Gene Symbol	AURKA
Uniprot ID	AURKA_HUMAN
Immunogen	The antiserum was produced against synthesized peptide derived from the human Aurora Kinase around the phosphorylation site of Thr288 at the amino acid range 256-305
Immunogen Region	256-305 aa
Specificity	Phospho-ARK-1 (T288) Polyclonal Antibody detects endogenous levels of ARK-1 protein only when phosphorylated at T288.
Immunogen Sequence	



Immunohistochemistry analysis of paraffin-embedded human breast carcinoma, using Aurora Kinase (Phospho-Thr288) Antibody. The picture on the right is blocked with the phospho peptide.



Western blot analysis of lysates from 293 cells treated with serum 20% 15', using Aurora Kinase (Phospho-Thr288) Antibody. The lane on the right is blocked with the phospho peptide.



Western blot analysis of 293 cells using Phospho-ARK-1 (T288) Polyclonal Antibody