

Anti-Phospho-XRCC6-Ser5 antibody (1-50 aa) (STJ90801)

STJ90801

GENERAL INFORMATION

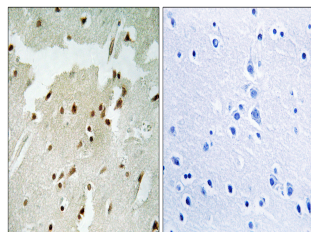
Product Type	Primary antibodies
Short Description	Rabbit polyclonal antibody anti-Phospho-X-ray repair cross-complementing protein 6-Ser5 (1-50 aa) is suitable for use in Western Blot, Immunohistochemistry, Immunofluorescence and ELISA research applications.
Applications	WB/IHC/IF/ELISA
Host/Source	Rabbit
Reactivity	Human/Mouse

PRODUCT PROPERTIES

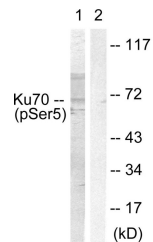
Clonality	Polyclonal
Clone ID	
Concentration	1 mg/mL
Conjugation	Unconjugated
Purification	The antibody was affinity-purified from rabbit antiserum by affinity-chromatography using epitope-specific immunogen.
Dilution	WB 1:500-1:2000
Range	IHC 1:100-1:300 ELISA 1:5000 IF 1:50-200
Formulation	Liquid in PBS containing 50% Glycerol, 0.5% BSA and 0.02% Sodium Azide.
Isotype	IgG
Storage	Store at -20°C for up to 1 year from the date of receipt, and avoid repeat freeze-thaw cycles.
Instruction	

TARGET INFORMATION

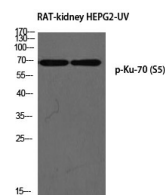
Gene ID	2547
Gene Symbol	XRCC6
Uniprot ID	XRCC6_HUMAN
Immunogen	The antiserum was produced against synthesized peptide derived from the human Ku70 around the phosphorylation site of Ser5 at the amino acid range 1-50
Immunogen Region	1-50 aa
Specificity	Phospho-Ku-70 (S5) Polyclonal Antibody detects endogenous levels of Ku-70 protein only when phosphorylated at S5.
Immunogen Sequence	



Immunohistochemistry analysis of paraffin-embedded human lung carcinoma, using Ku70 (Phospho-Ser5) Antibody. The picture on the right is blocked with the phospho peptide.



Western blot analysis of lysates from HeLa cells, using Ku70 (Phospho-Ser5) Antibody. The lane on the right is blocked with the phospho peptide.



Western blot analysis of RAT-kidney HEPG2-UV using p-Ku-70 (S5) antibody. Antibody was diluted at 1:1000