

Anti-Phospho-NR3C1-Ser226 antibody (201-250 aa) (STJ90794)

STJ90794

GENERAL INFORMATION

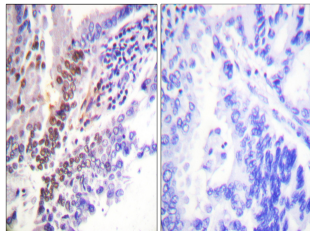
Product Type	Primary antibodies
Short Description	Rabbit polyclonal antibody anti-Phospho-Glucocorticoid receptor-Ser226 (201-250 aa) is suitable for use in Western Blot, Immunohistochemistry, Immunofluorescence and ELISA research applications.
Applications	WB/IHC/IF/ELISA
Host/Source	Rabbit
Reactivity	Human/Mouse/Rat

PRODUCT PROPERTIES

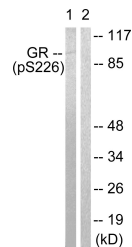
Clonality	Polyclonal
Clone ID	
Concentration	1 mg/mL
Conjugation	Unconjugated
Purification	The antibody was affinity-purified from rabbit antiserum by affinity-chromatography using epitope-specific immunogen.
Dilution	WB 1:500-1:2000
Range	IHC 1:100-1:300 ELISA 1:5000 IF 1:50-200
Formulation	Liquid in PBS containing 50% Glycerol, 0.5% BSA and 0.02% Sodium Azide.
Isotype	IgG
Storage Instruction	Store at -20°C for up to 1 year from the date of receipt, and avoid repeat freeze-thaw cycles.

TARGET INFORMATION

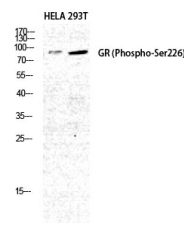
Gene ID	2908
Gene Symbol	NR3C1
Uniprot ID	GCR_HUMAN
Immunogen	The antiserum was produced against synthesized peptide derived from the human GR around the phosphorylation site of Ser226 at the amino acid range 201-250
Immunogen Region	201-250 aa
Specificity	Phospho-GR (S226) Polyclonal Antibody detects endogenous levels of GR protein only when phosphorylated at S226.
Immunogen Sequence	



Immunohistochemistry analysis of paraffin-embedded human lung carcinoma, using GR (Phospho-Ser226) Antibody. The picture on the right is blocked with the phospho peptide.



Western blot analysis of lysates from Jurkat cells treated with EGF 200ng/ml 15', using GR (Phospho-Ser226) Antibody. The lane on the right is blocked with the phospho peptide.



Western blot analysis of HELA 293T cells using Phospho-GR (S226) Polyclonal Antibody diluted at 1/1000.