

Anti-Phospho-GYS1-Ser645 antibody (611-660 aa) (STJ90793)

STJ90793

GENERAL INFORMATION

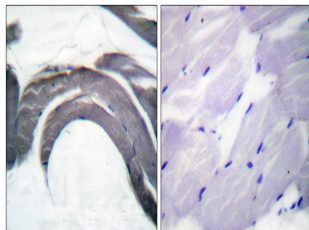
Product Type	Primary antibodies
Short Description	Rabbit polyclonal antibody anti-Phospho-Glycogen synthase, muscle-Ser645 (611-660 aa) is suitable for use in Western Blot, Immunohistochemistry, Immunofluorescence and ELISA research applications.
Applications	WB/IHC/IF/ELISA
Host/Source	Rabbit
Reactivity	Human/Mouse/Rat

PRODUCT PROPERTIES

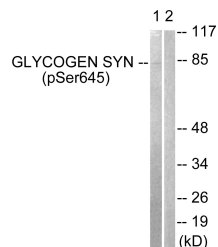
Clonality	Polyclonal
Clone ID	
Concentration	1 mg/mL
Conjugation	Unconjugated
Purification	The antibody was affinity-purified from rabbit antiserum by affinity-chromatography using epitope-specific immunogen.
Dilution	WB 1:500-1:2000
Range	IHC 1:100-1:300 ELISA 1:5000 IF 1:50-200
Formulation	Liquid in PBS containing 50% Glycerol, 0.5% BSA and 0.02% Sodium Azide.
Isotype	IgG
Storage Instruction	Store at -20°C for up to 1 year from the date of receipt, and avoid repeat freeze-thaw cycles.

TARGET INFORMATION

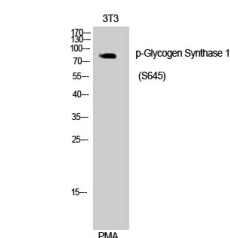
Gene ID	2997
Gene Symbol	GYS1
Uniprot ID	GYS1_HUMAN
Immunogen	The antiserum was produced against synthesized peptide derived from the human Glycogen Synthase around the phosphorylation site of Ser645 at the amino acid range 611-660
Immunogen Region	611-660 aa
Specificity	Phospho-Glycogen Synthase 1 (S645) Polyclonal Antibody detects endogenous levels of Glycogen Synthase 1 protein only when phosphorylated at S645.
Immunogen Sequence	



Immunohistochemistry analysis of paraffin-embedded human skeletal muscle, using Glycogen Synthase (Phospho-Ser645) Antibody. The picture on the right is blocked with the phospho peptide.



Western blot analysis of lysates from NIH/3T3 cells treated with PMA (125ng/ml 30'), using Glycogen Synthase (Phospho-Ser645) Antibody. The lane on the right is blocked with the phospho peptide.



Western blot analysis of 293 cells using Phospho-Glycogen Synthase 1 (S645) Polyclonal Antibody.