

Anti-Phospho-CHEK2-Thr387 antibody (361-410 aa) (STJ90784)

STJ90784

GENERAL INFORMATION

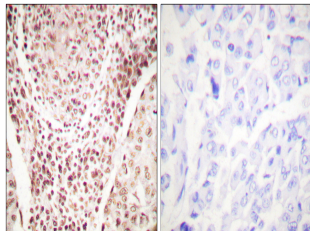
Product Type	Primary antibodies
Short Description	Rabbit polyclonal antibody anti-Phospho-Serine/threonine-protein kinase Chk2-Thr387 (361-410 aa) is suitable for use in Western Blot, Immunohistochemistry, Immunofluorescence and ELISA research applications.
Applications	WB/IHC/IF/ELISA
Host/Source	Rabbit
Reactivity	Human/Mouse/Rat

PRODUCT PROPERTIES

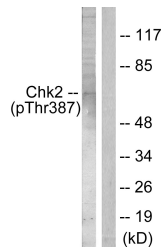
Clonality	Polyclonal
Clone ID	
Concentration	1 mg/mL
Conjugation	Unconjugated
Purification	The antibody was affinity-purified from rabbit antiserum by affinity-chromatography using epitope-specific immunogen.
Dilution Range	WB 1:500-1:2000 IHC 1:100-1:300 ELISA 1:5000 IF 1:50-200
Formulation	Liquid in PBS containing 50% Glycerol, 0.5% BSA and 0.02% Sodium Azide.
Isotype	IgG
Storage Instruction	Store at -20°C for up to 1 year from the date of receipt, and avoid repeat freeze-thaw cycles.

TARGET INFORMATION

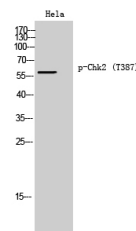
Gene ID	11200
Gene Symbol	CHEK2
Uniprot ID	CHK2_HUMAN
Immunogen	The antiserum was produced against synthesized peptide derived from the human Chk2 around the phosphorylation site of Thr387 at the amino acid range 361-410
Immunogen Region	361-410 aa
Specificity	Phospho-Chk2 (T387) Polyclonal Antibody detects endogenous levels of Chk2 protein only when phosphorylated at T387.
Immunogen Sequence	



Immunohistochemistry analysis of paraffin-embedded human breast carcinoma, using Chk2 (Phospho-Thr387) Antibody. The picture on the right is blocked with the phospho peptide.



Western blot analysis of lysates from Jurkat cells, using Chk2 (Phospho-Thr387) Antibody. The lane on the right is blocked with the phospho peptide.



Western blot analysis of HeLa cells using Phospho-Chk2 (T387) Polyclonal Antibody diluted at 1:1500 cells nucleus extracted by Minute TM Cytoplasmic and Nuclear Fractionation kit (SC-003, Inventiotech, MN, USA).