

Anti-Phospho-SYK-Tyr348 antibody (314-363 aa) (STJ90774)

STJ90774

GENERAL INFORMATION

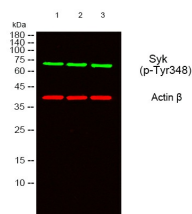
Product Type	Primary antibodies
Short Description	Rabbit polyclonal antibody anti-Phospho-Tyrosine-protein kinase SYK-Tyr348 (314-363 aa) is suitable for use in Western Blot, Immunohistochemistry, Immunofluorescence and ELISA research applications.
Applications	WB/IHC/IF/ELISA
Host/Source	Rabbit
Reactivity	Human/Mouse/Rat/Monkey

PRODUCT PROPERTIES

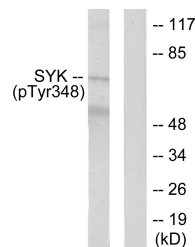
Clonality	Polyclonal
Clone ID	
Concentration	1 mg/mL
Conjugation	Unconjugated
Purification	The antibody was affinity-purified from rabbit antiserum by affinity-chromatography using epitope-specific immunogen.
Dilution Range	WB 1:500-1:2000 IHC 1:100-1:300 ELISA 1:10000 IF 1:50-200
Formulation	Liquid in PBS containing 50% Glycerol, 0.5% BSA and 0.02% Sodium Azide.
Isotype	IgG
Storage Instruction	Store at -20°C for up to 1 year from the date of receipt, and avoid repeat freeze-thaw cycles.

TARGET INFORMATION

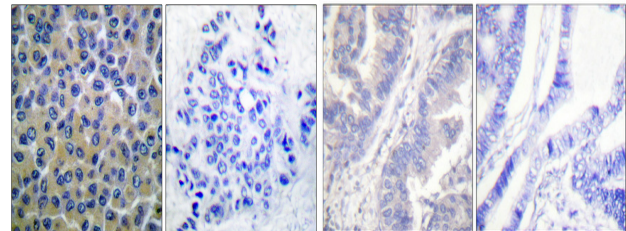
Gene ID	6850
Gene Symbol	SYK
Uniprot ID	KSYK_HUMAN
Immunogen	The antiserum was produced against synthesized peptide derived from the human SYK around the phosphorylation site of Tyr348 at the amino acid range 314-363
Immunogen Region	314-363 aa
Specificity	Phospho-Syk (Y348) Polyclonal Antibody detects endogenous levels of Syk protein only when phosphorylated at Y348.
Immunogen Sequence	



Western blot analysis of lysates from 1) 3T3, 2) HT29, 3) HepG2 cells. (Green) primary antibody was diluted at 1:1000, 4A°C over night, secondary antibody (cat: (NA) was diluted at 1:10000, 37A°C 1hour. (Red) Actin Beta monoclonal antibody (5B7) (cat: (STJ98930) antibody was diluted at 1:5000 as loading control, 4A°C over night, secondary antibody (cat: (NA) was diluted at 1:10000, 37A°C 1hour.



Western blot analysis of lysates from COS7 cells treated with EGF 200ng/ml 30', using SYK (Phospho-Tyr348) Antibody. The lane on the right is blocked with the phospho peptide.



Immunohistochemistry analysis of paraffin-embedded human breast carcinoma, using SYK (Phospho-Tyr348) Antibody. The picture on the right is blocked with the phospho peptide.

Immunohistochemical analysis of paraffin-embedded Human lung cancer. Antibody was diluted at 1:100 (4A°C overnight). High-pressure and temperature Tris-EDTA, pH8.0 was used for antigen retrieval. Negative control (right) obtained from antibody was pre-absorbed by immunogen peptide.

This product is suitable for in-vitro studies under the RESEARCH USE ONLY [RUO] licence. This product must not be used as for diagnostic or other medical purposes.

St John's Laboratory Ltd, Knowledge Dock Business Centre, University Way, London, E16 2RD | Tel: 0208 223 3081