

Anti-Phospho-PLCG2-Tyr753 antibody (721-770 aa) (STJ90768)

STJ90768

GENERAL INFORMATION

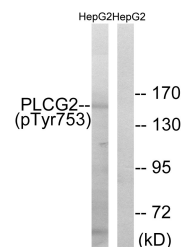
Product Type	Primary antibodies
Short Description	Rabbit polyclonal antibody anti-Phospho-1-phosphatidylinositol 4, 5-bisphosphate phosphodiesterase gamma-2-Tyr753 (721-770 aa) is suitable for use in Western Blot, Immunohistochemistry, Immunofluorescence and ELISA research applications.
Applications	WB/IHC/IF/ELISA
Host/Source	Rabbit
Reactivity	Human/Mouse/Rat

PRODUCT PROPERTIES

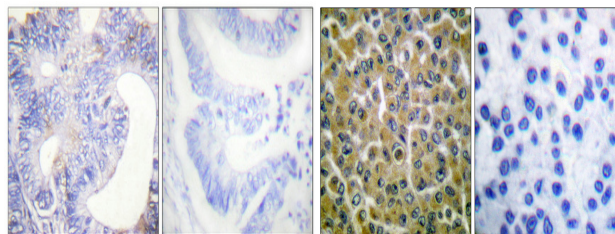
Clonality	Polyclonal
Clone ID	
Concentration	1 mg/mL
Conjugation	Unconjugated
Purification	The antibody was affinity-purified from rabbit antiserum by affinity-chromatography using epitope-specific immunogen.
Dilution	WB 1:500-1:2000
Range	IHC 1:100-1:300 ELISA 1:5000 IF 1:50-200
Formulation	Liquid in PBS containing 50% Glycerol, 0.5% BSA and 0.02% Sodium Azide.
Isotype	IgG
Storage Instruction	Store at -20°C for up to 1 year from the date of receipt, and avoid repeat freeze-thaw cycles.

TARGET INFORMATION

Gene ID	5336
Gene Symbol	PLCG2
Uniprot ID	PLCG2_HUMAN
Immunogen	The antiserum was produced against synthesized peptide derived from the human PLCG2 around the phosphorylation site of Tyr753 at the amino acid range 721-770
Immunogen Region	721-770 aa
Specificity	Phospho-PLC Gamma 2 (Y753) Polyclonal Antibody detects endogenous levels of PLC Gamma 2 protein only when phosphorylated at Y753.
Immunogen Sequence	

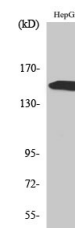


Western blot analysis of lysates from HepG2 cells treated with Na_2VO_4 0.3mM 40' using PLCG2 (Phospho-Tyr753) Antibody. The lane on the right is blocked with the phospho peptide.



Immunohistochemical analysis of paraffin-embedded human colon cancer. Antibody was diluted at 1:100 (4A'C overnight). High-pressure and temperature Tris-EDTA, pH8.0 was used for antigen retrieval. Negative control (right) obtained from antibody was pre-absorbed by immunogen peptide.

Immunohistochemistry analysis of paraffin-embedded human breast carcinoma, using PLCG2 (Phospho-Tyr753) Antibody. The picture on the right is blocked with the phospho peptide.



Western blot analysis of various cells using Phospho-PLC Gamma 2 (Y753) Polyclonal Antibody

This product is suitable for in-vitro studies under the RESEARCH USE ONLY [RUO] licence. This product must not be used as for diagnostic or other medical purposes.

St John's Laboratory Ltd, Knowledge Dock Business Centre, University Way, London, E16 2RD | Tel: 0208 223 3081