

Anti-Phospho-PLCB3-Ser1105 antibody (1071-1120 aa) (STJ90766)

STJ90766

GENERAL INFORMATION

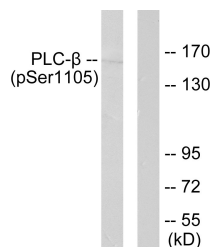
Product Type	Primary antibodies
Short Description	Rabbit polyclonal antibody anti-Phospho-1-phosphatidylinositol 4, 5-bisphosphate phosphodiesterase beta-3-Ser1105 (1071-1120 aa) is suitable for use in Western Blot, Immunohistochemistry, Immunofluorescence and ELISA research applications.
Applications	WB/IHC/IF/ELISA
Host/Source	Rabbit
Reactivity	Human/Mouse/Rat

PRODUCT PROPERTIES

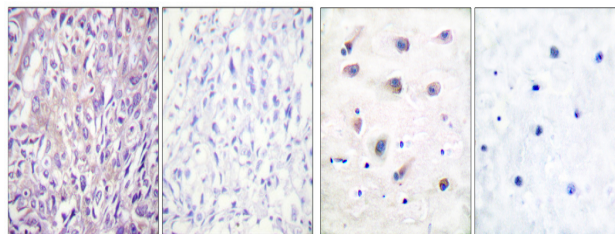
Clonality	Polyclonal
Clone ID	
Concentration	1 mg/mL
Conjugation	Unconjugated
Purification	The antibody was affinity-purified from rabbit antiserum by affinity-chromatography using epitope-specific immunogen.
Dilution Range	WB 1:500-1:2000 IHC 1:100-1:300 ELISA 1:10000 IF 1:50-200
Formulation	Liquid in PBS containing 50% Glycerol, 0.5% BSA and 0.02% Sodium Azide.
Isotype	IgG
Storage Instruction	Store at -20°C for up to 1 year from the date of receipt, and avoid repeat freeze-thaw cycles.

TARGET INFORMATION

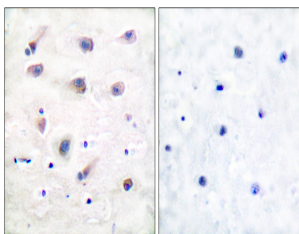
Gene ID	5331
Gene Symbol	PLCB3
Uniprot ID	PLCB3_HUMAN
Immunogen	The antiserum was produced against synthesized peptide derived from the human PLCB3 around the phosphorylation site of Ser1105 at the amino acid range 1071-1120
Immunogen Region	1071-1120 aa
Specificity	Phospho-PLC Beta 3 (S1105) Polyclonal Antibody detects endogenous levels of PLC Beta 3 protein only when phosphorylated at S1105.
Immunogen Sequence	



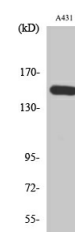
Western blot analysis of lysates from A431 cells, using PLCB3 (Phospho-Ser1105) Antibody. The lane on the right is blocked with the phospho peptide.



Immunohistochemical analysis of paraffin-embedded human breast cancer. Antibody was diluted at 1:100 (4A°C overnight). High-pressure and temperature Tris-EDTA, pH8.0 was used for antigen retrieval. Negative control (right) obtained from antibody was pre-absorbed by immunogen peptide.



Immunohistochemistry analysis of paraffin-embedded human brain, using PLCB3 (Phospho-Ser1105) Antibody. The picture on the right is blocked with the phospho peptide.



Western blot analysis of various cells using Phospho-PLC Beta 3 (S1105) Polyclonal Antibody diluted at 1:1000