

Anti-Phospho-CASP9-Thr125 antibody (91-140 aa) (STJ90758)

STJ90758

GENERAL INFORMATION

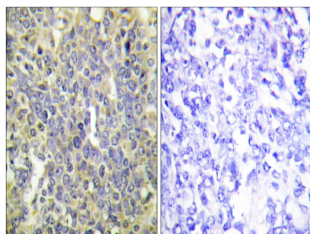
Product Type	Primary antibodies
Short Description	Rabbit polyclonal antibody anti-Phospho-Caspase-9-Thr125 (91-140 aa) is suitable for use in Western Blot, Immunohistochemistry, Immunofluorescence and ELISA research applications.
Applications	WB/IHC/IF/ELISA
Host/Source	Rabbit
Reactivity	Human/Mouse/Rat

PRODUCT PROPERTIES

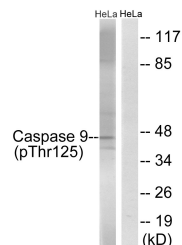
Clonality	Polyclonal
Clone ID	
Concentration	1 mg/mL
Conjugation	Unconjugated
Purification	The antibody was affinity-purified from rabbit antiserum by affinity-chromatography using epitope-specific immunogen.
Dilution Range	WB 1:500-1:2000 IHC 1:100-1:300 ELISA 1:5000 IF 1:50-200
Formulation	Liquid in PBS containing 50% Glycerol, 0.5% BSA and 0.02% Sodium Azide.
Isotype	IgG
Storage Instruction	Store at -20°C for up to 1 year from the date of receipt, and avoid repeat freeze-thaw cycles.

TARGET INFORMATION

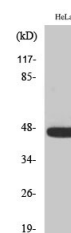
Gene ID	842
Gene Symbol	CASP9
Uniprot ID	CASP9_HUMAN
Immunogen	The antiserum was produced against synthesized peptide derived from the human Caspase 9 around the phosphorylation site of Thr125 at the amino acid range 91-140
Immunogen Region	91-140 aa
Specificity	Phospho-Caspase-9 (T125) Polyclonal Antibody detects endogenous levels of Caspase-9 protein only when phosphorylated at T125.
Immunogen Sequence	



Immunohistochemistry analysis of paraffin-embedded human lung carcinoma, using Caspase 9 (Phospho-Thr125) Antibody. The picture on the right is blocked with the phospho peptide.



Western blot analysis of lysates from HeLa cells treated with TNF 20ng/ml 5' + calyculinA 50ng/ml 5', using Caspase 9 (Phospho-Thr125) Antibody. The lane on the right is blocked with the phospho peptide.



Western blot analysis of various cells using Phospho-Caspase-9 (T125) Polyclonal Antibody diluted at 1/1000