

Anti-Phospho-CEBPA-Ser21 antibody (6-55 aa) (STJ90757)

STJ90757

GENERAL INFORMATION

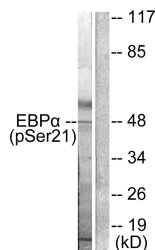
Product Type	Primary antibodies
Short Description	Rabbit polyclonal antibody anti-Phospho-CCAAT/enhancer-binding protein alpha-Ser21 (6-55 aa) is suitable for use in Western Blot, Immunohistochemistry, Immunofluorescence and ELISA research applications.
Applications	WB/IHC/IF/ELISA
Host/Source	Rabbit
Reactivity	Human/Mouse/Rat

PRODUCT PROPERTIES

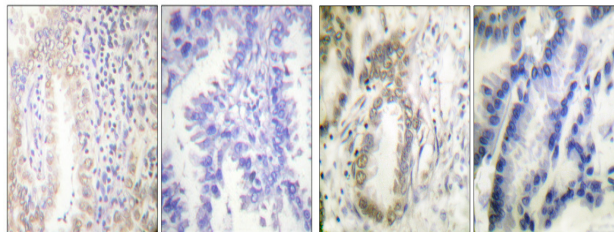
Clonality	Polyclonal
Clone ID	
Concentration	1 mg/mL
Conjugation	Unconjugated
Purification	The antibody was affinity-purified from rabbit antiserum by affinity-chromatography using epitope-specific immunogen.
Dilution	WB 1:500-1:2000
Range	IHC 1:100-1:300 ELISA 1:5000 IF 1:50-200
Formulation	Liquid in PBS containing 50% Glycerol, 0.5% BSA and 0.02% Sodium Azide.
Isotype	IgG
Storage Instruction	Store at -20°C for up to 1 year from the date of receipt, and avoid repeat freeze-thaw cycles.

TARGET INFORMATION

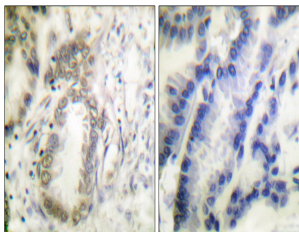
Gene ID	1050
Gene Symbol	CEBPA
Uniprot ID	CEBPA_HUMAN
Immunogen	The antiserum was produced against synthesized peptide derived from the human C/EBP-alpha around the phosphorylation site of Ser21 at the amino acid range 6-55
Immunogen Region	6-55 aa
Specificity	Phospho-C/EBP Alpha (S21) Polyclonal Antibody detects endogenous levels of C/EBP Alpha protein only when phosphorylated at S21.
Immunogen Sequence	



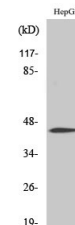
Western blot analysis of lysates from HepG2 cells treated with EGF 200ng/ml 5', using C/EBP-alpha (Phospho-Ser21) Antibody. The lane on the right is blocked with the phospho peptide.



Immunohistochemical analysis of paraffin-embedded human lung cancer. Antibody was diluted at 1:100 (4A/C overnight). High-pressure and temperature Tris-EDTA, pH8.0 was used for antigen retrieval. Negative control (right) obtained from antibody was pre-absorbed by immunogen peptide.



Immunohistochemistry analysis of paraffin-embedded human lung carcinoma, using C/EBP-alpha (Phospho-Ser21) Antibody. The picture on the right is blocked with the phospho peptide.



Western blot analysis of various cells using Phospho-C/EBP Alpha (S21) Polyclonal Antibody cells nucleus extracted by Minute TM Cytoplasmic and Nuclear Fractionation kit (SC-003, Inventiotech, MN, USA).