

Anti-Phospho-ACACA-Ser80 antibody (46-95 aa) (STJ90755)

STJ90755

GENERAL INFORMATION

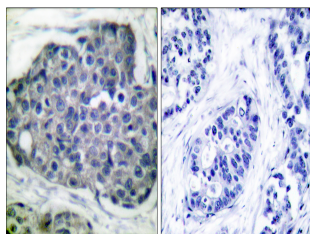
Product Type	Primary antibodies
Short Description	Rabbit polyclonal antibody anti-Phospho-Acetyl-CoA carboxylase 1-Ser80 (46-95 aa) is suitable for use in Western Blot, Immunohistochemistry, Immunofluorescence and ELISA research applications.
Applications	WB/IHC/IF/ELISA
Host/Source	Rabbit
Reactivity	Human/Mouse/Rat

PRODUCT PROPERTIES

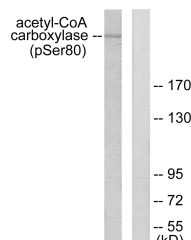
Clonality	Polyclonal
Clone ID	
Concentration	1 mg/mL
Conjugation	Unconjugated
Purification	The antibody was affinity-purified from rabbit antiserum by affinity-chromatography using epitope-specific immunogen.
Dilution	WB 1:500-1:2000
Range	IHC 1:100-1:300 ELISA 1:5000 IF 1:50-200
Formulation	Liquid in PBS containing 50% Glycerol, 0.5% BSA and 0.02% Sodium Azide.
Isotype	IgG
Storage Instruction	Store at -20°C for up to 1 year from the date of receipt, and avoid repeat freeze-thaw cycles.

TARGET INFORMATION

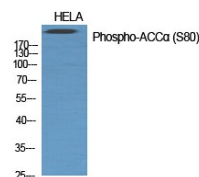
Gene ID	31
Gene Symbol	ACACA
Uniprot ID	ACACA_HUMAN
Immunogen	The antiserum was produced against synthesized peptide derived from the human Acetyl-CoA Carboxylase around the phosphorylation site of Ser80 at the amino acid range 46-95
Immunogen Region	46-95 aa
Specificity	Phospho-ACC Alpha (S80) Polyclonal Antibody detects endogenous levels of ACC Alpha protein only when phosphorylated at S80.
Immunogen Sequence	



Immunohistochemistry analysis of paraffin-embedded human breast carcinoma, using Acetyl-CoA Carboxylase (Phospho-Ser80) Antibody. The picture on the right is blocked with the phospho peptide.



Western blot analysis of lysates from 293 cells treated with EGF 200ng/ml 5', using Acetyl-CoA Carboxylase (Phospho-Ser80) Antibody. The lane on the right is blocked with the phospho peptide.



Western blot analysis of various cells using Phospho-ACC Alpha (S80) Polyclonal Antibody diluted at 1/1000

This product is suitable for in-vitro studies under the RESEARCH USE ONLY [RUO] licence. This product must not be used as for diagnostic or other medical purposes.
St John's Laboratory Ltd, Knowledge Dock Business Centre, University Way, London, E16 2RD | Tel: 0208 223 3081