

Anti-Phospho-TH-Ser71 antibody (41-90 aa) (STJ90749)

STJ90749

GENERAL INFORMATION

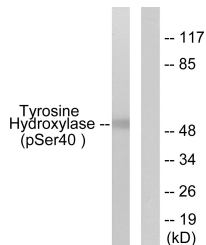
Product Type	Primary antibodies
Short Description	Rabbit polyclonal antibody anti-Phospho-Tyrosine 3-monooxygenase-Ser71 (41-90 aa) is suitable for use in Western Blot, Immunohistochemistry, Immunofluorescence and ELISA research applications.
Applications	WB/IHC/IF/ELISA
Host/Source	Rabbit
Reactivity	Human/Mouse/Rat

PRODUCT PROPERTIES

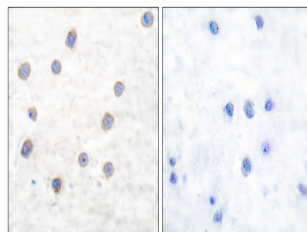
Clonality	Polyclonal
Clone ID	
Concentration	1 mg/mL
Conjugation	Unconjugated
Purification	The antibody was affinity-purified from rabbit antiserum by affinity-chromatography using epitope-specific immunogen.
Dilution	WB 1:500-1:2000
Range	IHC 1:100-1:300 ELISA 1:40000 IF 1:50-200
Formulation	Liquid in PBS containing 50% Glycerol, 0.5% BSA and 0.02% Sodium Azide.
Isotype	IgG
Storage Instruction	Store at -20°C for up to 1 year from the date of receipt, and avoid repeat freeze-thaw cycles.

TARGET INFORMATION

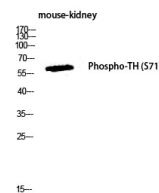
Gene ID	7054
Gene Symbol	TH
Uniprot ID	TY3H_HUMAN
Immunogen	The antiserum was produced against synthesized peptide derived from the human Tyrosine Hydroxylase around the phosphorylation site of Ser40 at the amino acid range 41-90
Immunogen Region	41-90 aa
Specificity	Phospho-TH (S71) Polyclonal Antibody detects endogenous levels of TH protein only when phosphorylated at S71.
Immunogen Sequence	



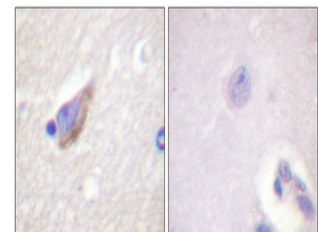
Western blot analysis of lysates from RAW264.7 cells treated with UV 30', using Tyrosine Hydroxylase (Phospho-Ser40) Antibody. The lane on the right is blocked with the phospho peptide.



Immunohistochemistry analysis of paraffin-embedded human brain, using Tyrosine Hydroxylase (Phospho-Ser40) Antibody. The picture on the right is blocked with the phospho peptide.



Western blot analysis of mouse-kidney lysis using Phospho-TH (S71) antibody. Antibody was diluted at 1:1000.



Immunohistochemical analysis of paraffin-embedded Human brain. Antibody was diluted at 1:100 (4A°C overnight). High-pressure and temperature Tris-EDTA, pH8.0 was used for antigen retrieval. Negative control (right) obtained from antibody was pre-absorbed by immunogen peptide.